



COUNTY OF DANE
DEPARTMENT OF ADMINISTRATION
PURCHASING DIVISION
City County Building
210 Martin Luther King Jr. Blvd. Room 425
Madison, WI 53703-3345

GREG BROCKMEYER
Director of Administration

CHARLES HICKLIN
Controller

Date: April 16, 2021
To: All Proposers
Subject: Addendum #4 to RFP #121027 Audio Visual Upgrades at the City County Building

The Following questions were received and responses are provided:

- 1) In room 321 will you be removing the whiteboard or will we be mounting over the top of the whiteboard? **Keynote 3 in drawing Q306 states "Field modify existing marker board to accommodate the new display."**
- 2) With the reduced staff in the building and the comments from Jon, the person in charge of the jail/detention facility on the 2nd floor, will floor coring and drilling need to take place during off hours or will we be able to complete all of our work during normal business hours? **The County will try to accommodate a schedule that is within normal business hours whenever possible. The Contractor will communicate with County personnel when they expect to be doing any coring and drilling work. For bidding purposes, please provide pricing for labor for the floor coring and drilling during off hours to cover any instances that the County may not be able to accommodate during normal business hours.**
- 3) Can you please describe/provide direction and drawings for the ADA bump-outs needed at the display locations? **The bump outs shall be dry wall and painted to match the current wall color. Please see revised drawing Q000 for further detail.**
- 4) What material are the floors made of? **Please see page 3 of this addendum for details on concrete floors in the City County Building.**
- 5) Can race tracks be added to room 201 to hide the exposed wiring? **Yes. Please see amended drawing Q201 with this detail added.**
- 6) Can overlay drawings be provided for the 2nd and 3rd floor? **Please see drawing Q202 for this detail.**
- 7) Need to confirm number of PTZ cameras in 354. They suggested the quantity shown on the line drawing vs the floor plan were different. If our drawings are correct, no need to issue clarification. **There are (2) new cameras as show on the line drawing. Additionally, there are some existing PTZ cameras on the demo drawing. There are a total of 5 cameras shown. 3 are existing and 2 are new.**
- 8) Please provide some guidance as to where the new 3rd floor poke thru devices land as it relates to 2nd floor ceilings. Some appear to be over Juvenile Detention area. **Please see the overlay drawings, Q202 for this detail.**

The following drawings have been added or revised and can be found at the following link:

<https://countyofdane.sharefile.com/d-see440f56426a4d19850026a5183b2264>

Q000 Q201
Q202 Q301
Q306



GREG BROCKMEYER
Director of Administration

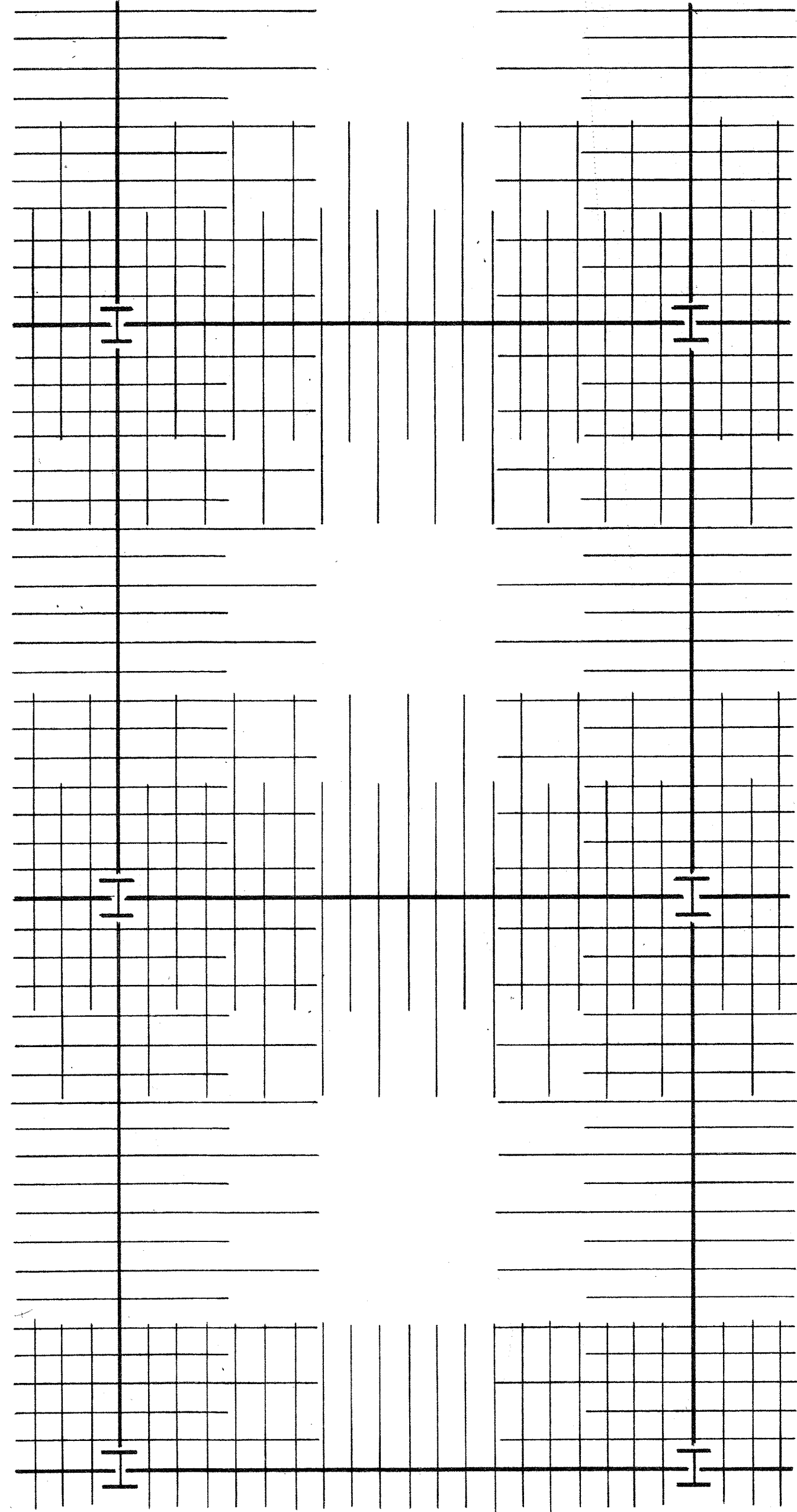
COUNTY OF DANE
DEPARTMENT OF ADMINISTRATION
PURCHASING DIVISION
City County Building
210 Martin Luther King Jr. Blvd. Room 425
Madison, WI 53703-3345

CHARLES HICKLIN
Controller

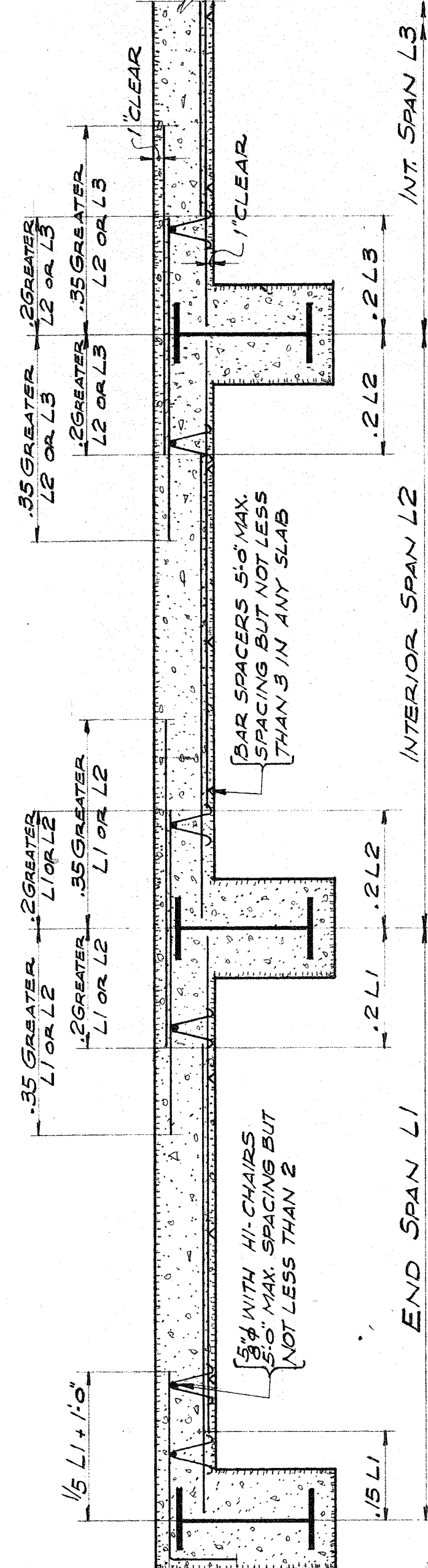
Please acknowledge receipt of this addendum by checking the "Addendum #4" box in **Section 6 – Required Forms – Attachment A - Vendor Information** of your proposal response. If you have questions regarding this addendum, please contact me via phone or email as listed below.

Sincerely,

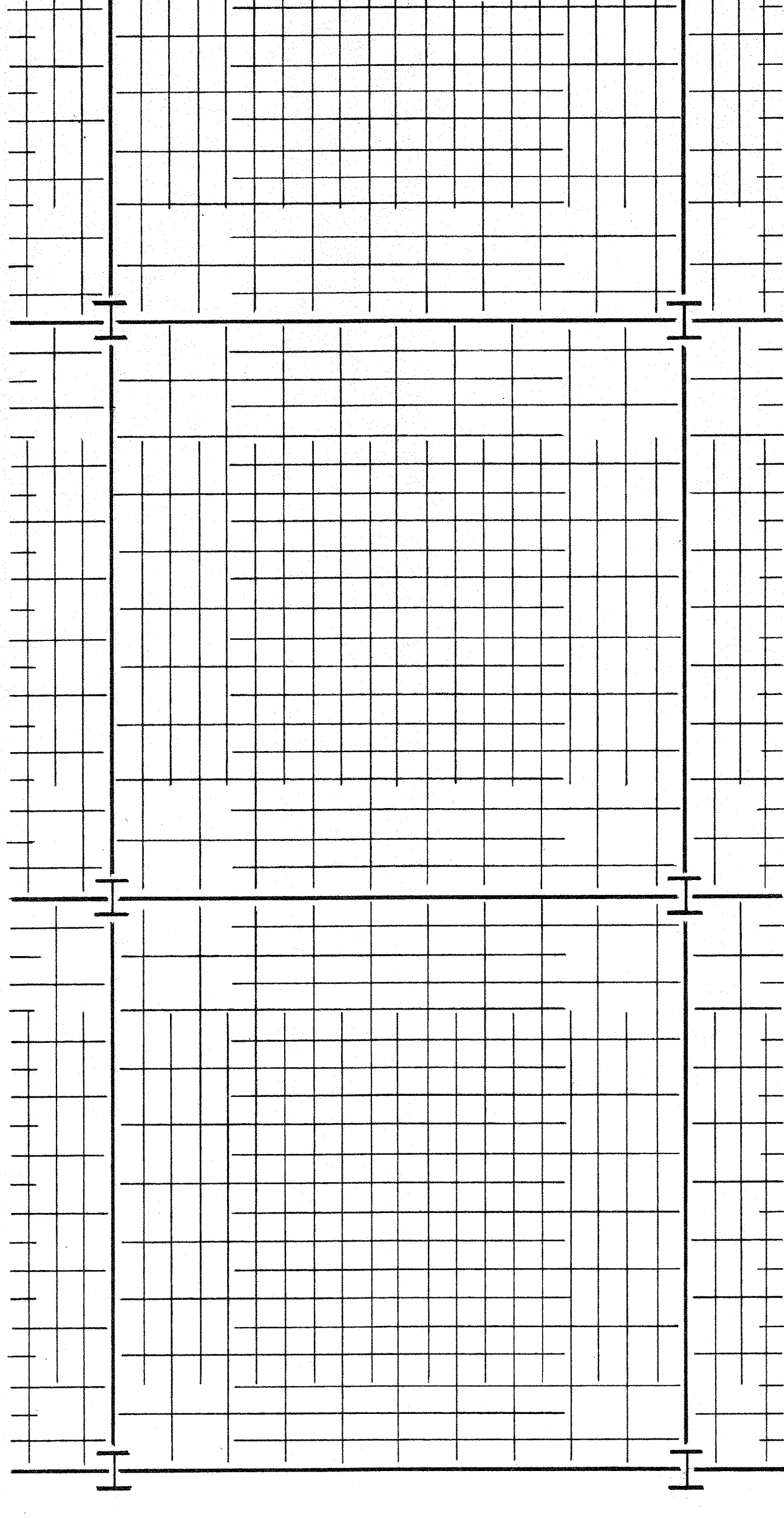
Megan Rogan
Purchasing Officer
608-283-1487
rogan.megan@countyofdane.com



PLAN OF TOP STEEL



TYPICAL SECTION EACH DIRECTION



PLAN OF BOTTOM STEEL

TYPICAL CONCRETE SLAB REINFORCING DETAILS

NOTE: PREFIX "T" ON PLANS INDICATE TOP BARS. PREFIX "B" ON PLANS INDICATE BOTTOM BARS. SEE SCHEDULE FOR REINFORCING IN TWO WAY SLABS. BOTTOM BARS IN SHORT DIRECTION TO BE PLACED FIRST. IN ONE WAY SLABS: PROVIDE TEMPERATURE STEEL AT RIGHT ANGLES TO MAIN REINFORCING. SEE TEMPERATURE STEEL SCHEDULE.

20 BAR DIA. 10 MIN. CONSTRUCTION JOINT BARS

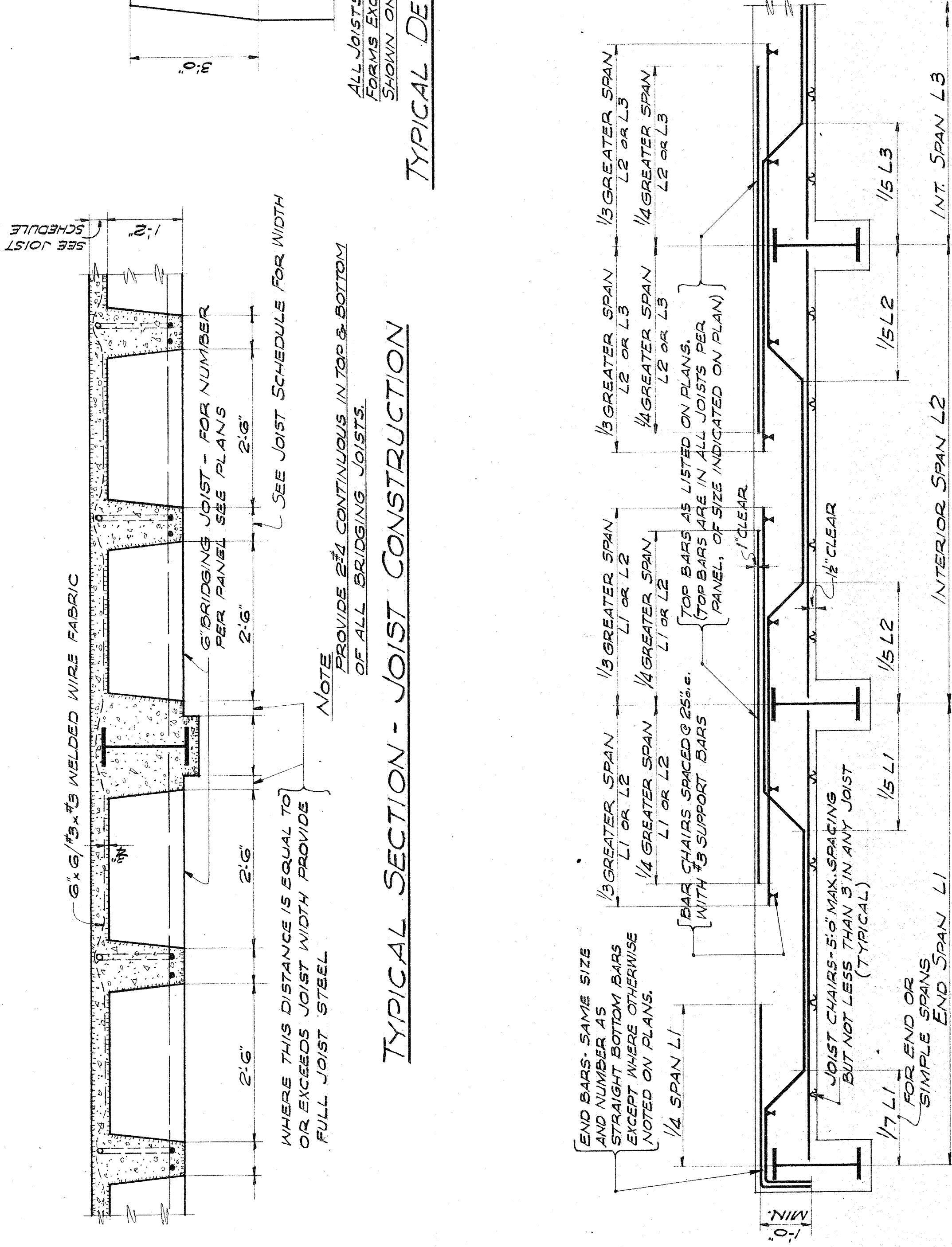
NOTE: CONSTRUCTION JOINT BARS FOR SLABS SHALL BE STRAIGHT BARS OF SAME SIZE AND SPACING AS THE MAIN OR TEMPERATURE REINFORCING LIVING IN THE SAME DIRECTION.

SLAB CONSTRUCTION JOINT DETAIL

JOIST SCHEDULE		STEEL	
MARK	JOIST WIDTH	DEPTH	STA. BENT BARS
J1	6'	14" x 3"	1-#5 1-#6
J2	6'	14" x 3"	1-#5 1-#7
J3	6'	14" x 3"	1-#6 1-#8
J4	6'	14" x 3"	1-#6 1-#8
J5	6'	14" x 3"	1-#6 1-#8
J6	6'	14" x 3"	1-#6 1-#8
J7	6'	14" x 3"	1-#7 1-#7
J8	6'	14" x 3"	1-#7 1-#7
J9	6'	14" x 4"	1-#6 1-#7
J10	6'	14" x 4"	1-#6 1-#7
J11	6'	14" x 4"	1-#6 1-#7
J12	6'	14" x 3"	1-#5 1-#7
J13	6'	14" x 4"	1-#5 1-#8
J14	6'	14" x 4"	1-#5 1-#8
J15	6'	14" x 4"	1-#5 1-#8
J16	6'	14" x 4"	1-#4 1-#5
J17	6'	14" x 4"	1-#4 1-#5
J18	6'	14" x 4"	1-#6 1-#6
J19	6'	14" x 3"	1-#7 1-#8
J20	6'	14" x 3"	1-#4 1-#5
J21	6'	14" x 3"	1-#5 1-#5
J22	6'	14" x 3"	1-#5 1-#8
J23	6'	14" x 3"	1-#7 1-#7
J24	6'	14" x 3"	1-#7 1-#7
J25	8'	14" x 3"	1-#6 1-#9
J26	8'	14" x 3"	1-#6 1-#9
J27	6'	14" x 6"	1-#5 1-#6
J28	6'	14" x 6"	1-#7 1-#7
J29	7'	14" x 3"	1-#7 1-#7
J30	6'	14" x 4"	1-#5 1-#7
J31	6'	14" x 4"	1-#8 1-#9
J32	7'	14" x 3"	1-#8 1-#9
J33	7'	14" x 3"	1-#9 1-#9
J34	6'	14" x 3"	2-#5 BOTT.
J35	6'	14" x 3"	1-#9 1-#9
J36	6'	14" x 4"	1-#5 1-#6
J37	7'	14" x 3"	1-#6 1-#6
J38	6'	14" x 4"	2-#5 BOTT.

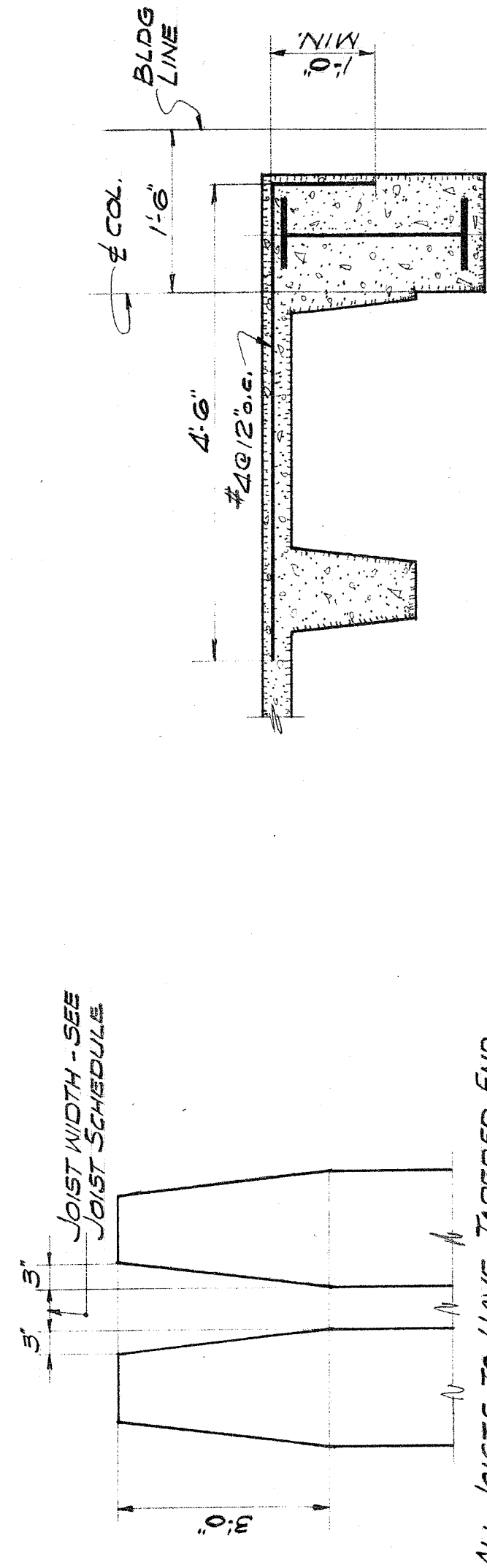
SCHEDULE OF SLAB REINFORCING STEEL		STEEL	
TOP STEEL	BOTT. STEEL	MARK	REINFR.
T1	B1	#4 @ 12"	#4 @ 12"
T2	B2	#4 @ 11"	#4 @ 11"
T3	B3	#4 @ 10"	#4 @ 10"
T4	B4	#4 @ 9"	#4 @ 9"
T5	B5	#5 @ 12"	#5 @ 12"
T6	B6	#5 @ 11"	#5 @ 11"
T7	B7	#5 @ 10"	#5 @ 10"
T8	B8	#5 @ 9"	#5 @ 9"
T9	B9	#5 @ 8"	#5 @ 8"
T10	B10	#5 @ 7"	#5 @ 7"
T11	B11	#5 @ 6"	#5 @ 6"
T12	B12	#5 @ 5"	#5 @ 5"
T13	B13	#6 @ 8"	#6 @ 8"
T14	B14	#6 @ 5"	#6 @ 5"
T15	B15	#6 @ 4"	#6 @ 4"
T16	B16	#7 @ 4"	#7 @ 4"

SCHEDULE OF TEMPERATURE STEEL		STEEL	
SLAB THICKNESS	TEMPERATURE STEEL	MARK	REINFR.
5"	#3 @ 12" o.c.		
5 1/2"	#4 @ 18" o.c.		
6"	#4 @ 16" o.c.		
6 1/2"	#4 @ 16" o.c.		
7"	#4 @ 14" o.c.		
7 1/2"	#4 @ 14" o.c.		
8"	#4 @ 12" o.c.		
9"	#5 @ 15" o.c.		
10"	#5 @ 15" o.c.		



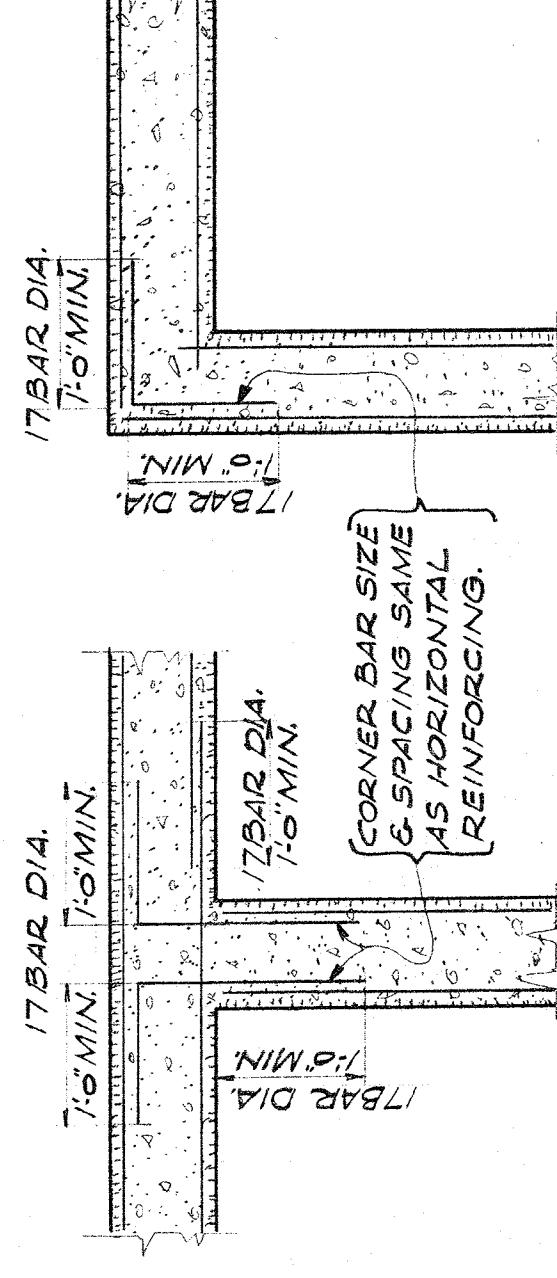
TYPICAL JOIST BAR BENDING & PLACING DIAGRAM

UNLESS OTHERWISE SHOWN OR NOTED



TYPICAL SECTION WHERE JOISTS RUN PARALLEL TO SPANDREL BEAMS

TYPICAL DETAIL OF JOIST TAPER



TYPICAL CORNER DETAIL FOR HORIZONTAL REINFORCING