



Employer Group Reporting Package

Prepared For

Dane County

Plan Years 2011 and 2012

Report Date:

05/07/2013

This document contains proprietary confidential information. You may not copy or redistribute this information without proper authorization from the originator.

**Dane County
Annual Employer Group Report
Periods of 01/01/2011 – 12/31/2011 (Year 2011) and
01/01/2012 – 12/31/2012 (Year 2012)
Table of Contents**

Executive Summary	Page 3
Accounting Summary	Page 6
Member Demographics	Page 7
Member Utilization Levels	Page 8
Comparison to Benchmarks	Page 9
Key Operational Indicators	Page 10
Detailed Medical Findings	Page 14
Large Cases	Page 16
Emergency Room and Urgent Care Use	Page 19
Pharmacy Profile	Page 21
Good Health Bonus Rewards and Employee Wellness	Page 23
Physicians Plus 2011 HEDIS Results	Page 24
Glossary of Medical Definitions	Page 26

Notes:

- *Reports include all claims incurred in the period reported and paid through March 31, 2013.*
- *Lag factors were applied, unless noted.*

Executive Summary
Dane County
Plan: Q02256
Plan Years 2011 and 2012

The attached report for Dane County focuses upon the group's medical and pharmacy claim experience for the fiscal periods of January 1, 2011 through December 31, 2011 (2011) and January 1, 2012 through December 31, 2012 (2012). The group's membership for 2011 averaged 6,144 members per month and increased 0.5% to 6,173 average members per month in 2012. Premium per member per month (PMPM) decreased by 4.2% from 2011 to 2012 to \$385.52 PMPM. Over that same period claims expense increased by 5.2% PMPM to \$437.84 PMPM. Inpatient Hospital claim paid amounts increased by 11.6%, while outpatient hospital paid amounts increased by 6.8%.

An age/gender factor has been assigned to Dane County membership for plan years 2011 and 2012. Age/gender factors compare the age and gender risk of medical costs of one group relative to another. An age/gender factor above 1.00 indicates higher than average risk of medical costs due to that factor. Conversely, a factor below 1.00 indicates a lower than average risk. Dane County's average age/gender factor was at 1.1488 in 2011 and increased to 1.1549 in 2012. This is higher than the overall factor for all Physicians Plus members, which was at 1.0551 in 2012. Further detail is provided on the charts on page 7 of this report.

The charts beginning on page 8 show member utilization levels for all Dane County members for 2011 and 2012. Members with less than \$1,000 of medical claims accounted for 44.0% of total membership and just 4.5% of claims paid in 2012. Conversely, in 2012, members with \$10,000 or more of claims were 9.8% of membership but 61.7% of medical costs.

Dane County's 2012 claims experience compared to PPLUS's 2012 commercial group benchmarks can be found on page 9. The benchmark report shows that Dane County is above the overall benchmarks in all areas of service. The Opportunities chart shows that Dane County is 38% and \$6.56 PMPM over benchmark in hospital inpatient medical. Also over benchmark is hospital outpatient emergency room, which is 26% and \$3.10 PMPM over benchmark, prescription drugs which are 41% and \$22.13 PMPM over benchmark, and hospital outpatient surgery which is 32% and \$7.51 PMPM over benchmark.

The Key Operational Indicator reports beginning on page 10 shows changes in costs and utilization in detail between 2011 and 2012. Inpatient days per 1,000 members increased by 17.3%, and amounts paid PMPM increased by 11.6%. Overall outpatient facility utilization increased by 2.0% while experiencing an increase in amounts paid of 6.8%.

The next several pages of the report provide detailed medical findings. Page 14 shows the top 10 inpatient DRGs by amounts paid. Major joint replacement had the largest amount paid for an inpatient DRG in both 2011 and 2012.

The following report on page 15 shows total patient encounters by Diagnosis Group. This is a high level look at total group utilization of all types of services. In 2012 Musculoskeletal/Connective, Mental, and Ill-Defined Conditions were the most prevalent diagnoses for medical claims. These conditions are explained in detail in the glossary beginning on page 26 of this report.

Dane County's large cases (single member case having \$50,000 or more in claims in a year) resulted in \$5,498,666 paid in 2012. These large cases were responsible for 20.5% of medical claims paid in 2012. This is a slight decrease from 2011 where the large cases were responsible for 21.7% of total paid.

Emergency Room (ER) visits are important components of overall medical costs. On page 19 we can see that Dane County members utilized the ER at a rate of 179 visits per 1,000 members. Dane County members' ER utilization is above the overall PPLUS rate which is at 142 ER visits per 1,000. Ill-defined conditions, injury and poisoning, and respiratory are the top diagnosis classifications. Urgent care utilization is shown on page 20. Dane County members utilized urgent care services at a rate of 384 visits per 1,000 in 2012. Dane County Urgent care utilization is below the PPLUS overall urgent care rate of 418 visits per 1,000. (Urgent care is a combination of hospital outpatient and physician immediate care visits.)

Dane County's pharmacy costs are illustrated on pages 21 and 22. Generic drugs were 80.9% of total prescriptions and just 26.3% of total pharmacy costs. The average brand drug had a cost of \$249.73 per prescription compared to just \$21.02 for generics. The top drug therapeutic classes by number of prescriptions are antidepressants, lipotropics, and cardiovascular preparations.

Physicians Plus has several programs to promote and improve member wellness. GO-TO Healthy Choices is our online personal health manager, the first of its kind in our market. It connects our members to unique health information based on their health histories, health practices and personal health goals, and provides customized health management and/or improvement plans. Participants can earn up to \$100 in Good Health Bonus rewards just for participating. For employers, aggregate reports can provide insight into the health of your company's population. These aggregate statistics can help you identify areas of concern or risk and respond proactively — with health screenings, health fairs, incentive programs and more.

Physicians Plus Good Health Bonuses earned by Dane County members can be found on page 23 of this report. Physicians Plus paid **\$124,660** in bonuses in 2012 to **1,676** total members. Good Health Bonuses can be earned for taking the Health Risk Assessment and Lifestyle Coaching sessions, participating in Weight Watchers or our Weigh-To-Go program, taking health-related classes, maintaining a gym membership or purchasing a fresh produce share from MACSAC, FRESH Food Connection or a Simply Wisconsin farm.

Physicians Plus encourages preventive care with a sustained program of monthly mailings, reminding members to have mammography screenings, Pap smears, colorectal screenings, well child examinations and more.

Physicians Plus strives to maximize the effectiveness and efficiency of its chronic condition management by adopting a stratified approach, increasing the intensity of interventions proportionally to the amount of risk. These interventions may range from tracking ongoing medical information for low-risk individuals to one-on-one telephonic case management for those individuals at higher risk levels.

Lifestyle Coaching Sessions – Programs designed to address lifestyle factors that may reduce risk for chronic illness or manage existing chronic illness. These Go-To Healthy Choices online programs include

- Breathe™
- Relax™
- Balance™
- Move™
- Nourish™
- Care for Diabetes™
- Care for Your Back™
- Care for Pain™
- Overcoming Insomnia™
- Overcoming Depression™
- Overcoming Binge Eating™

Community-Based Programs – Programs provided by community organizations, including local hospitals, and reimbursed in full or in part by Physicians Plus. These programs include Active Living and Learning, Mind-Body Medicine Skills for a Healthy Heart and Skills for a Happy Heart.

Case Management – Physicians Plus offers one-on-one telephonic case management for individuals with diabetes, coronary artery disease, heart failure and complex illnesses.

Healthcare Effectiveness Data and Information Set (HEDIS) – HEDIS is a set of standardized measures used to evaluate how health plans manage the care of their members. HEDIS allows comparisons against national benchmarks, which shows how the measures compare to other health plans across the United States. HEDIS allows comparisons between plans on quality, access and patient satisfaction, membership and utilization, financial information, and health plan management. 90% of all health plans in the United States take part in HEDIS.

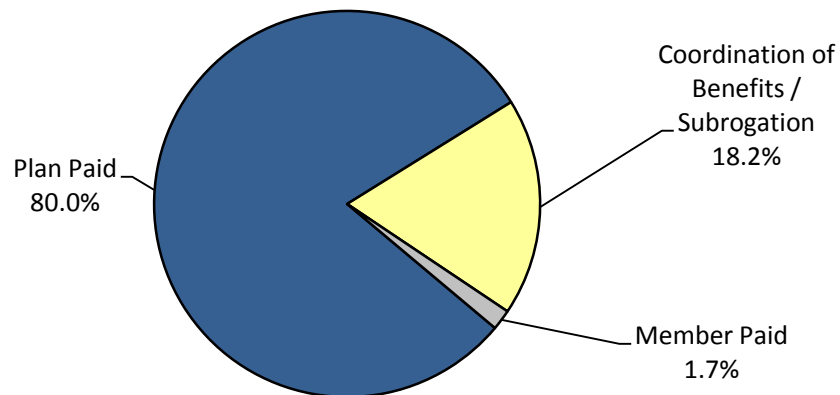
Physicians Plus collects and monitors performance on 45 measures related to preventive health services, health condition management, testing and treatment. A summary of Physicians Plus' HEDIS results for 2012 can be found beginning on page 24. The results show that Physicians Plus is at or above the NCQA national average for 95% of the measures. Physicians Plus also ranks #1 among our local competitors in five measures. The table on page 25 shows a comparison of the utilization of a select number of preventive services for Dane County members when compared to all Physicians Plus members and how those measures compare to the 50th and 90th national percentiles.

Experience Accounting Summary

Dane County

	January - December 2012			January - December 2011			Percent Change
Experience Period:	6,173			6,144			0.5%
Avg Members per Month:	74,070			73,728			0.5%
Member Months:							
	Total \$	\$PMPM	% of Premium	Total \$	\$PMPM	% of Premium	\$ PMPM
Premium	\$ 28,555,132	\$ 385.52	100.00%	\$ 29,674,220	\$ 402.48	100.00%	-4.2%
Incurred Claims							
Inpatient Hospital	\$ 5,522,659	\$ 74.56	19.34%	\$ 4,925,030	\$ 66.80	16.60%	11.6%
Outpatient Hospital	\$ 7,581,805	\$ 102.36	26.55%	\$ 7,069,041	\$ 95.88	23.82%	6.8%
Physician	\$ 13,690,358	\$ 184.83	47.94%	\$ 12,978,340	\$ 176.03	43.74%	5.0%
Pharmacy	\$ 5,635,986	\$ 76.09	19.74%	\$ 5,715,395	\$ 77.52	19.26%	-1.8%
Claims Subtotal	\$ 32,430,809	\$ 437.84	113.57%	\$ 30,687,805	\$ 416.23	103.42%	5.2%

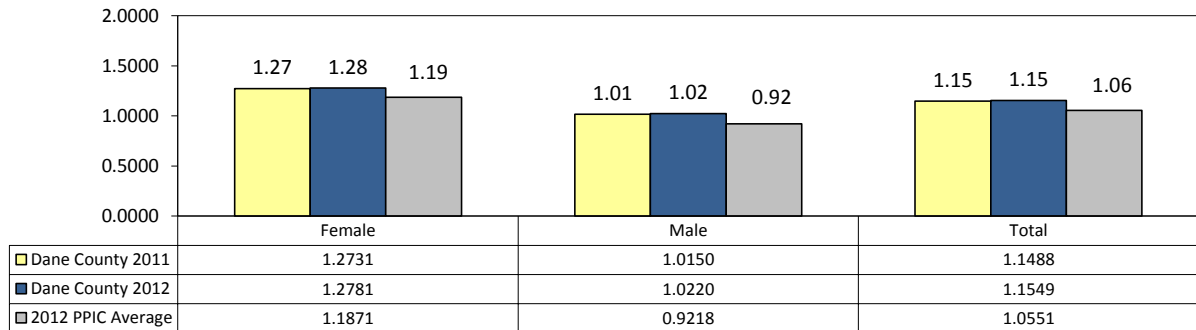
2012 Claims Distribution by Payment Source



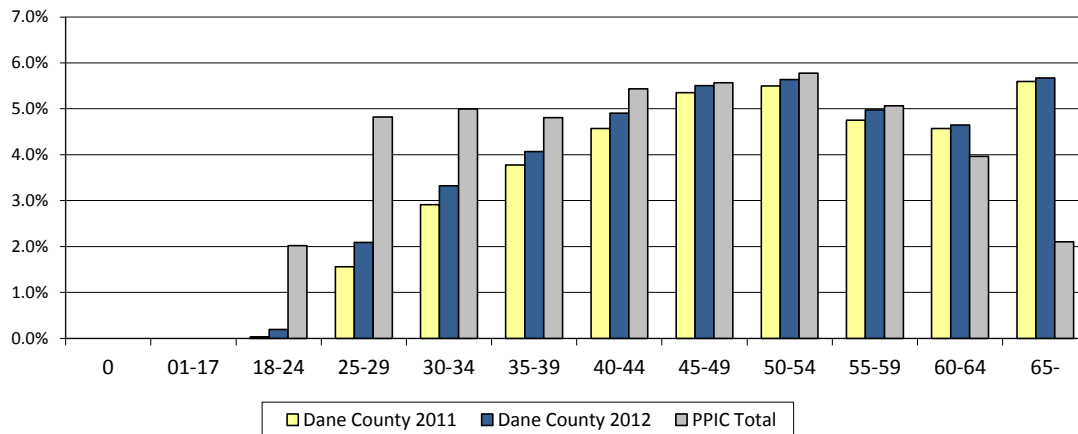
Member Demographics

An age/gender factor above 1.00 indicates a higher than average risk of medical costs due to age and gender. A factor of less than 1.00 indicates a lower than average risk of medical costs.

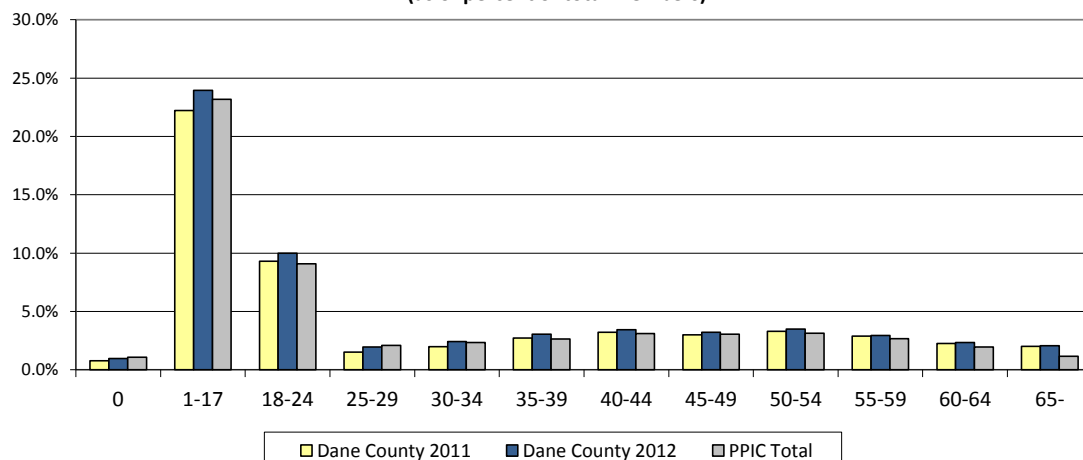
Age/Gender Factors



**Subscriber Age - 2011-2012
(as a percent of total members)**



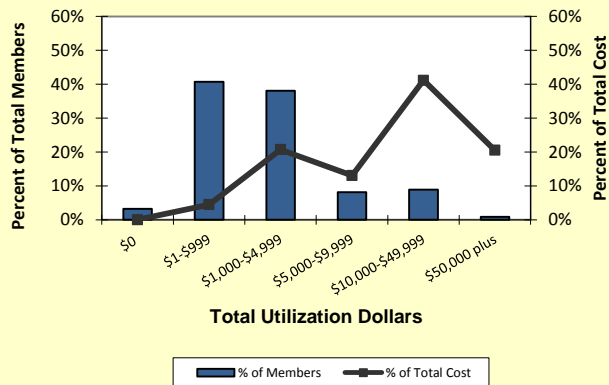
**Dependent Age - 2011 - 2012
(as of percent of total members)**



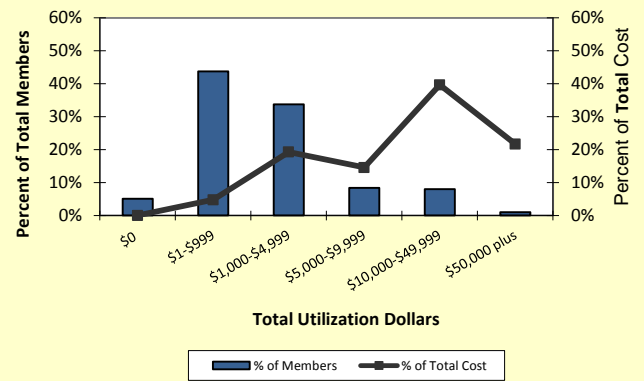
Member Utilization

Dane County 2012

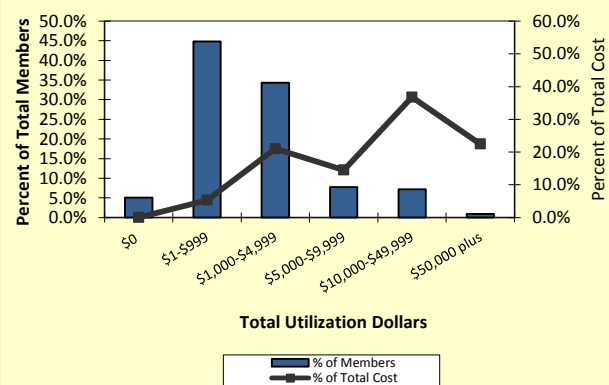
Total Medical Claims	Members	% of Members	Total Cost	% of Cost
\$0	200	3.2%	\$ -	0.0%
\$1-\$999	2,516	40.8%	\$ 1,199,559	4.5%
\$1,000-\$4,999	2,348	38.0%	\$ 5,548,954	20.7%
\$5,000-\$9,999	505	8.2%	\$ 3,495,409	13.0%
\$10,000-\$49,999	550	8.9%	\$ 11,031,638	41.2%
\$50,000 plus	54	0.9%	\$ 5,498,692	20.5%
2012 Totals	6,173	100.0%	\$ 26,794,823	100.0%

2012 Member Medical Utilization Analysis

Dane County 2011

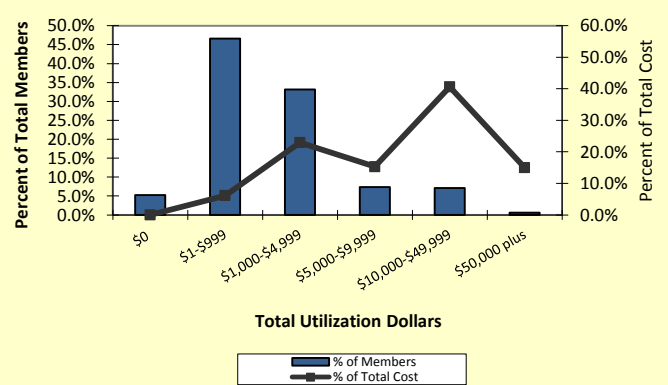
Total Medical Claims	Members	% of Members	Total Cost	% of Cost
\$0	314	5.1%	\$ -	0.0%
\$1-\$999	2,687	43.7%	\$ 1,193,885	4.8%
\$1,000-\$4,999	2,076	33.8%	\$ 4,823,495	19.3%
\$5,000-\$9,999	516	8.4%	\$ 3,637,698	14.6%
\$10,000-\$49,999	491	8.0%	\$ 9,901,655	39.7%
\$50,000 plus	60	1.0%	\$ 5,408,333	21.7%
2011 Totals	6,144	100.0%	\$ 24,965,065	100.0%

2011 Member Medical Utilization Analysis

Dane County 2010

Total Medical Claims	Members	% of Members	Total Cost	% of Cost
\$0	307	5.0%	\$ -	0.0%
\$1-\$999	2,729	44.8%	\$ 1,190,118	5.3%
\$1,000-\$4,999	2,089	34.3%	\$ 4,725,941	21.0%
\$5,000-\$9,999	470	7.7%	\$ 3,264,354	14.5%
\$10,000-\$49,999	436	7.2%	\$ 8,278,509	36.8%
\$50,000 plus	55	0.9%	\$ 5,050,615	22.4%
2010 Totals	6,086	100.0%	\$ 22,509,537	100.0%

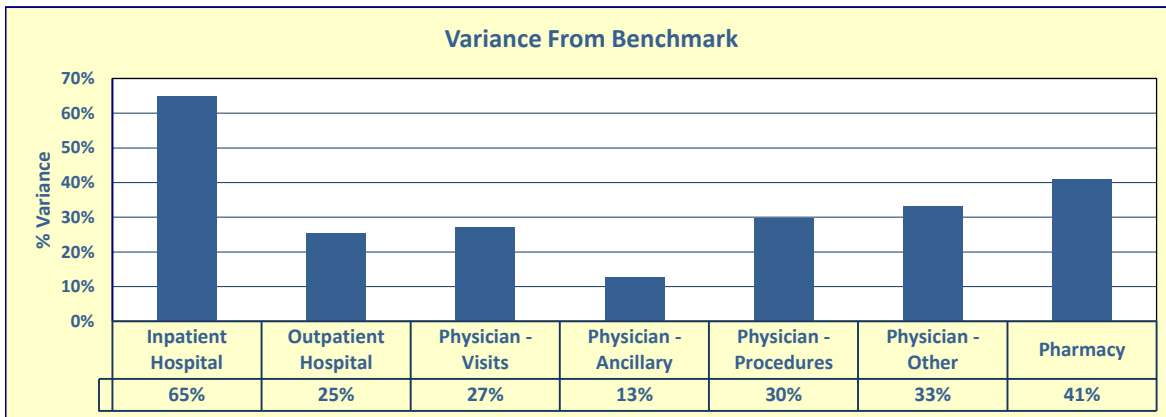
2010 Member Medical Utilization Analysis

Dane County 2009

Total Medical Claims	Members	% of Members	Total Cost	% of Cost
\$0	314	5.3%	\$ -	0.0%
\$1-\$999	2,774	46.6%	\$ 1,230,613	6.1%
\$1,000-\$4,999	1,974	33.1%	\$ 4,606,449	23.0%
\$5,000-\$9,999	437	7.3%	\$ 3,069,468	15.3%
\$10,000-\$49,999	425	7.1%	\$ 8,154,123	40.6%
\$50,000 plus	34	0.6%	\$ 3,006,587	15.0%
2009 Totals	5,958	100.0%	\$ 20,067,240	100.0%

2009 Member Medical Utilization Analysis


Comparison to Commercial Group Benchmarks

Summary of Medical Services January - December 2012 Utilization Rates Per 1000 Members	DANE COUNTY Actual Experience	2012 PPIC Commercial Group Benchmark	Variance From Benchmark
Inpatient Hospital	407	247	65%
Outpatient Hospital	2,464	1,965	25%
Physician - Visits	6,378	5,018	27%
Physician - Ancillary	8,641	7,666	13%
Physician - Procedures	1,020	786	30%
Physician - Other	1,576	1,184	33%
Pharmacy	16,056	11,387	41%



Opportunities Chart (Selected Categories):

Selected Service Categories	DANE COUNTY Actual Experience	2012 PPIC Commercial Group Benchmark	Variance From Benchmark	PMPM Due to Utilization Above Benchmark
<u>Hospital Inpatient</u>				
Medical	105	76	38%	\$6.56
Surgical	88	78	13%	\$3.77
Extended Care Fac.	144	40	260%	\$1.51
<u>Hospital Outpatient</u>				
ER	179	142	26%	\$3.10
Surgery	242	183	32%	\$7.51
Other Outpatient Svcs	964	702	37%	\$4.72
<u>Physician - Visits</u>				
Office Visits	2,944	2,364	25%	\$4.93
Vision, Hearing, Speech Exams	744	560	33%	\$1.15
Outpatient Psychiatric	778	528	47%	\$1.88
<u>Physician - Ancillary</u>				
Radiology	1,445	1,208	20%	\$3.73
Therapeutic Injections	297	231	29%	\$1.18
Allergy Tests & Injections	172	96	79%	\$0.66
<u>Physician - Procedures</u>				
Inpatient Surgery	71	52	37%	\$2.44
Office Outpatient Surgery	318	243	31%	\$1.05
Outpatient Surgery Center	463	340	36%	\$7.70
<u>Physician - Other</u>				
DME/Prosthetics	315	188	68%	\$0.97
Cardiovascular	272	198	37%	\$1.07
Diagnostic Testing	414	283	46%	\$1.66
<u>Prescription Drugs</u>				
	16,056	11,387	41%	\$22.13

****If utilization were reduced to the benchmark, with the group's average unit paid PMPM unchanged.**

(does not include all sub-categories with over-utilization, and does not include impact of under-utilized categories)

Key Operational Indicators

Dane County

I. Summary

Time Period:

January - December 2012

January - December 2011

Average Members Per Month:

6,173

6,144

Total Member Months:

74,070

73,728

	January - December 2012						January - December 2011						Percent Change		
	Rate Per 1,000 Members	Number of Procedures	Unit Average Billed	Unit Average Paid	Amount Billed PMPM	Amount Paid PMPM	Rate Per 1,000 Members	Number of Procedures	Unit Average Billed	Unit Average Paid	Amount Billed PMPM	Amount Paid PMPM	Procedures per 1,000 Members	Amount Billed PMPM	Amount Paid PMPM
Inpatient (Days):	407	2,513	\$ 5,916	\$ 2,198	\$ 200.75	\$ 74.56	347	2,130	\$ 6,063	\$ 2,313	\$ 175.17	\$ 66.80	17.3%	14.6%	11.6%
Outpatient:	2,464	15,205	\$ 1,290	\$ 499	\$ 264.85	\$ 102.36	2,415	14,842	\$ 1,240	\$ 476	\$ 249.62	\$ 95.88	2.0%	6.1%	6.8%
Physician:	17,615	108,720	\$ 265	\$ 126	\$ 388.83	\$ 184.83	17,730	108,933	\$ 252	\$ 119	\$ 373.00	\$ 176.03	-0.6%	4.2%	5.0%
					\$ 854.43	\$ 361.75					\$ 797.79	\$ 338.71		7.1%	6.8%
Pharmacy:	16,056	99,107		\$ 56.87	\$ 76.09	\$ 76.09	17,009	104,501		\$ 54.69	\$ 77.52	\$ 77.52	-5.6%	-1.8%	-1.8%
Total:	36,542	225,545			\$ 930.52	\$ 437.84					\$ 875.31	\$ 416.23	-100.0%	6.3%	5.2%

Key Operational Indicators

Dane County, continued

II. Inpatient Facility Utilization

	January - December 2012					January - December 2011					Percent Change		
	Admits per 1,000 Members	Actual Inpatient Admits	Average Length of Stay	Days per 1,000 Members	Actual Inpatient Days	Admits per 1,000 Members	Actual Inpatient Admits	Average Length of Stay	Days per 1,000 Members	Actual Inpatient Days	Inpatient Admissions per 1,000	Average Length of Stay	Inpatient Days per 1,000
Medical	29	178	3.6	105	651	30	185	3.1	94	578	-3.3%	16.1%	11.7%
Surgical	23	140	3.8	88	546	25	152	3.4	86	526	-8.0%	11.8%	2.3%
Psychiatric	5	28	5.6	28	171	5	28	5.0	25	155	0.0%	12.0%	12.0%
Substance Abuse	2	15	4.0	8	47	2	12	2.5	5	32	0.0%	60.0%	60.0%
Maternity	11	67	3.1	34	212	9	54	2.9	26	160	22.2%	6.9%	30.8%
Extended Care Fac.	9	57	16.0	144	886	7	42	15.9	111	679	28.6%	0.6%	29.7%
Total	79	485	5.2	407	2,513	78	473	4.5	347	2,130	1.3%	15.6%	17.3%

	January - December 2012						January - December 2011						Percent Change		
	Days per 1,000 Members	Actual Inpatient Days	Unit Average Billed	Unit Average Paid	Amount Billed PMPM	Amount Paid PMPM	Days per 1,000 Members	Actual Inpatient Days	Unit Average Billed	Unit Average Paid	Amount Billed PMPM	Amount Paid PMPM	Inpatient Days per 1,000	Amount Billed PMPM	Amount Paid PMPM
Medical	105	651	\$ 7,508	\$ 2,714	\$ 66.00	\$ 23.85	94	578	\$ 7,349	\$ 2,692	\$ 57.61	\$ 21.10	11.7%	14.6%	13.0%
Surgical	88	546	\$ 13,927	\$ 4,528	\$ 102.68	\$ 33.38	86	526	\$ 12,688	\$ 4,470	\$ 90.52	\$ 31.89	2.3%	13.4%	4.7%
Psychiatric	28	171	\$ 2,552	\$ 1,056	\$ 5.88	\$ 2.43	25	155	\$ 2,639	\$ 1,509	\$ 5.55	\$ 3.17	12.0%	5.9%	-23.3%
Substance Abuse	8	47	\$ 3,506	\$ 2,191	\$ 2.25	\$ 1.40	5	32	\$ 3,333	\$ 1,432	\$ 1.45	\$ 0.62	60.0%	55.2%	125.8%
Maternity	34	212	\$ 6,033	\$ 3,990	\$ 17.26	\$ 11.42	26	160	\$ 6,971	\$ 3,794	\$ 15.13	\$ 8.23	30.8%	14.1%	38.8%
Extended Care Fac.	144	886	\$ 558	\$ 174	\$ 6.68	\$ 2.08	111	679	\$ 533	\$ 194	\$ 4.91	\$ 1.79	29.7%	36.0%	16.2%
Total	407	2,513	\$ 5,916	\$ 2,198	\$ 200.75	\$ 74.56	347	2,130	\$ 6,063	\$ 2,313	\$ 175.17	\$ 66.80	17.3%	14.6%	11.6%

Key Operational Indicators

Dane County, continued

III. Outpatient Facility and Other

	January - December 2012						January - December 2011						Percent Change		
	Procedures per 1,000 Members	Actual Outpatient Procedures	Unit Average Billed	Unit Average Paid	Amount Billed PMPM	Amount Paid PMPM	Procedures per 1,000 Members	Actual Outpatient Procedures	Unit Average Billed	Unit Average Paid	Amount Billed PMPM	Amount Paid PMPM	Procedures per 1,000 Members	Amount Billed PMPM	Amount Paid PMPM
Emergency Room	179	1,103	\$ 2,566	\$ 1,004	\$ 38.22	\$ 14.95	182	1,121	\$ 2,427	\$ 1,133	\$ 36.91	\$ 17.22	-1.6%	3.5%	-13.2%
Urgent Care	89	550	\$ 357	\$ 225	\$ 2.65	\$ 1.67	99	606	\$ 345	\$ 236	\$ 2.83	\$ 1.94	-10.1%	-6.4%	-13.9%
Surgery	242	1,494	\$ 3,672	\$ 1,527	\$ 74.05	\$ 30.80	226	1,390	\$ 3,576	\$ 1,545	\$ 67.41	\$ 29.12	7.1%	9.9%	5.8%
Radiology	309	1,907	\$ 2,079	\$ 800	\$ 53.51	\$ 20.60	304	1,866	\$ 2,043	\$ 719	\$ 51.70	\$ 18.19	1.6%	3.5%	13.2%
Pathology/Lab	334	2,060	\$ 1,146	\$ 298	\$ 31.87	\$ 8.30	330	2,030	\$ 1,346	\$ 294	\$ 37.05	\$ 8.10	1.2%	-14.0%	2.5%
Therapies (PT/OT/Speech)	347	2,142	\$ 742	\$ 301	\$ 21.46	\$ 8.71	390	2,395	\$ 619	\$ 267	\$ 20.11	\$ 8.69	-11.0%	6.7%	0.2%
Other Outpatient Svcs	964	5,949	\$ 537	\$ 216	\$ 43.09	\$ 17.33	884	5,434	\$ 456	\$ 171	\$ 33.61	\$ 12.62	9.0%	28.2%	37.3%
Total	2,464	15,205	\$ 1,290	\$ 499	\$ 264.85	\$ 102.36	2,415	14,842	\$ 1,240	\$ 476	\$ 249.62	\$ 95.88	2.0%	6.1%	6.8%

IV. Physician and Other Professional Providers Utilization

	January - December 2012						January - December 2011						Percent Change		
	Procedures per 1,000 Members	Actual Physician Procedures	Unit Average Billed	Unit Average Paid	Amount Billed PMPM	Amount Paid PMPM	Procedures per 1,000 Members	Actual Physician Procedures	Unit Average Billed	Unit Average Paid	Amount Billed PMPM	Amount Paid PMPM	Procedures per 1,000 Members	Amount Billed PMPM	Amount Paid PMPM
Visits:															
Inpatient Visits	387	2,391	\$ 307	\$ 105	\$ 9.91	\$ 3.40	353	2,167	\$ 319	\$ 116	\$ 9.38	\$ 3.42	9.6%	5.7%	-0.6%
Office Visits	2,944	18,171	\$ 178	\$ 102	\$ 43.79	\$ 25.08	3,025	18,588	\$ 169	\$ 95	\$ 42.59	\$ 23.86	-2.7%	2.8%	5.1%
Immediate Care Visits	601	3,707	\$ 109	\$ 67	\$ 5.47	\$ 3.36	574	3,525	\$ 111	\$ 66	\$ 5.33	\$ 3.15	4.7%	2.6%	6.7%
Consults	134	827	\$ 392	\$ 233	\$ 4.38	\$ 2.60	124	764	\$ 386	\$ 239	\$ 4.00	\$ 2.47	8.1%	9.5%	5.3%
Emergency Room Visits	192	1,183	\$ 443	\$ 217	\$ 7.08	\$ 3.47	195	1,199	\$ 431	\$ 198	\$ 7.00	\$ 3.22	-1.5%	1.1%	7.8%
Well Baby Exams	41	256	\$ 175	\$ 158	\$ 0.60	\$ 0.55	43	265	\$ 172	\$ 111	\$ 0.62	\$ 0.40	-4.7%	-3.2%	37.5%
Physical Exams	465	2,873	\$ 233	\$ 192	\$ 9.04	\$ 7.44	465	2,856	\$ 216	\$ 146	\$ 8.36	\$ 5.64	0.0%	8.1%	31.9%
Vision, Hearing, Speech Exams	744	4,595	\$ 105	\$ 75	\$ 6.52	\$ 4.65	745	4,578	\$ 102	\$ 61	\$ 6.36	\$ 3.82	-0.1%	2.5%	21.7%
Outpatient Psychiatric	778	4,800	\$ 182	\$ 90	\$ 11.82	\$ 5.82	740	4,544	\$ 170	\$ 82	\$ 10.48	\$ 5.04	5.1%	12.8%	15.5%
Outpatient Substance Abuse	92	569	\$ 206	\$ 72	\$ 1.58	\$ 0.55	34	211	\$ 166	\$ 110	\$ 0.47	\$ 0.32	170.6%	236.2%	71.9%
Total	6,378	39,372	\$ 188	\$ 107	\$ 100.19	\$ 56.92	6,298	38,697	\$ 180	\$ 98	\$ 94.59	\$ 51.34	1.3%	5.9%	10.9%

Dane County, continued

IV. Physician and Other Professional Providers Utilization (cont)

	January - December 2012						January - December 2011						Percent Change		
	Procedures per 1,000 Members	Actual Physician Procedures	Unit Average Billed	Unit Average Paid	Amount Billed PMPM	Amount Paid PMPM	Procedures per 1,000 Members	Actual Physician Procedures	Unit Average Billed	Unit Average Paid	Amount Billed PMPM	Amount Paid PMPM	Procedures per 1,000 Members	Amount Billed PMPM	Amount Paid PMPM
Ancillary:															
Radiology	1,445	8,918	\$ 384	\$ 189	\$ 46.26	\$ 22.74	1,438	8,836	\$ 369	\$ 180	\$ 44.24	\$ 21.58	0.5%	4.6%	5.4%
Pathology	4,099	25,299	\$ 99	\$ 52	\$ 33.69	\$ 17.69	4,393	26,991	\$ 90	\$ 47	\$ 32.81	\$ 17.26	-6.7%	2.7%	2.5%
Therapeutic Injections	297	1,832	\$ 482	\$ 214	\$ 11.91	\$ 5.30	315	1,936	\$ 563	\$ 299	\$ 14.78	\$ 7.86	-5.7%	-19.4%	-32.6%
Immunizations	1,248	7,701	\$ 63	\$ 49	\$ 6.52	\$ 5.09	1,153	7,085	\$ 59	\$ 39	\$ 5.67	\$ 3.75	8.2%	15.0%	35.7%
Allergy Tests & Injections	172	1,062	\$ 159	\$ 104	\$ 2.28	\$ 1.50	147	901	\$ 185	\$ 110	\$ 2.26	\$ 1.34	17.0%	0.9%	11.9%
Physical Therapy	273	1,683	\$ 88	\$ 36	\$ 2.00	\$ 0.81	261	1,606	\$ 88	\$ 39	\$ 1.91	\$ 0.84	4.6%	4.7%	-3.6%
Chiropractor	941	5,808	\$ 58	\$ 22	\$ 4.57	\$ 1.70	1,012	6,216	\$ 57	\$ 22	\$ 4.78	\$ 1.88	-7.0%	-4.4%	-9.6%
Podiatrist	166	1,027	\$ 147	\$ 84	\$ 2.03	\$ 1.17	151	925	\$ 205	\$ 106	\$ 2.57	\$ 1.32	9.9%	-21.0%	-11.4%
	8,641	53,330	\$ 152	\$ 75	\$ 109.26	\$ 56.00	8,870	54,496	\$ 147	\$ 73	\$ 109.02	\$ 55.83	-2.6%	0.2%	0.3%
Procedures:															
Inpatient Surgery	71	438	\$ 5,186	\$ 1,541	\$ 30.65	\$ 9.10	62	378	\$ 5,232	\$ 1,546	\$ 26.82	\$ 7.93	14.5%	14.3%	14.8%
Office Outpatient Surgery	318	1,964	\$ 393	\$ 168	\$ 10.42	\$ 4.44	304	1,868	\$ 401	\$ 187	\$ 10.15	\$ 4.74	4.6%	2.7%	-6.3%
Outpatient Surgery Center	463	2,856	\$ 1,922	\$ 751	\$ 74.11	\$ 28.95	448	2,755	\$ 1,912	\$ 755	\$ 71.45	\$ 28.20	3.3%	3.7%	2.7%
Obstetrics - Deliveries	13	83	\$ 5,067	\$ 3,542	\$ 5.64	\$ 3.95	10	59	\$ 4,557	\$ 2,980	\$ 3.65	\$ 2.38	30.0%	54.5%	66.0%
Obstetrics - Non-Deliveries	20	122	\$ 386	\$ 250	\$ 0.63	\$ 0.41	7	42	\$ 571	\$ 319	\$ 0.33	\$ 0.18	185.7%	90.9%	127.8%
Anesthesia	135	833	\$ 1,370	\$ 578	\$ 15.41	\$ 6.51	133	820	\$ 1,175	\$ 561	\$ 13.07	\$ 6.24	1.5%	17.9%	4.3%
	1,020	6,296	\$ 1,610	\$ 628	\$ 136.86	\$ 53.36	964	5,922	\$ 1,562	\$ 619	\$ 125.47	\$ 49.67	5.8%	9.1%	7.4%
Other:															
PDN/Home Health	42	257	\$ 197	\$ 101	\$ 0.68	\$ 0.35	53	323	\$ 235	\$ 131	\$ 1.03	\$ 0.57	-20.8%	-34.0%	-38.6%
Ambulance	124	766	\$ 318	\$ 201	\$ 3.29	\$ 2.08	124	764	\$ 268	\$ 155	\$ 2.78	\$ 1.60	0.0%	18.3%	30.0%
DME/Prosthetics	315	1,942	\$ 218	\$ 92	\$ 5.71	\$ 2.41	360	2,212	\$ 283	\$ 95	\$ 8.49	\$ 2.86	-12.5%	-32.7%	-15.7%
Cardiovascular	272	1,676	\$ 597	\$ 173	\$ 13.52	\$ 3.92	269	1,650	\$ 571	\$ 215	\$ 12.77	\$ 4.81	1.1%	5.9%	-18.5%
Diagnostic Testing	414	2,553	\$ 338	\$ 152	\$ 11.66	\$ 5.24	429	2,636	\$ 341	\$ 157	\$ 12.19	\$ 5.63	-3.5%	-4.3%	-6.9%
Other (Office) Services	409	2,528	\$ 224	\$ 133	\$ 7.66	\$ 4.55	363	2,233	\$ 220	\$ 123	\$ 6.66	\$ 3.72	12.7%	15.0%	22.3%
	1,576	9,722	\$ 324	\$ 141	\$ 42.52	\$ 18.55	1,598	9,818	\$ 330	\$ 144	\$ 43.92	\$ 19.19	-1.4%	-3.2%	-3.3%
Grand Total for IV	17,615	108,720	\$ 265	\$ 126	\$ 388.83	\$ 184.83	17,730	108,933	\$ 252	\$ 119	\$ 373.00	\$ 176.03	-0.6%	4.2%	5.0%

V. Pharmacy

Prescriptions	16,056	99,107	\$ 56.87	\$ 76.09	17,009	104,501	\$ 54.69	\$ 77.52	-5.6%	-1.8%
---------------	--------	--------	----------	----------	--------	---------	----------	----------	-------	-------

Top Inpatient Diagnoses

Year	2012	Inpatient			% of Total
DRG	DRG Descr	Patients	Days	Total Paid	IP Paid
470	Major Joint Replacement Or Reattachment Of Lower Extremity W/O Mcc	21	64	\$ 250,679	4.6%
775	Vaginal Delivery W/O Complicating Diagnoses	37	98	\$ 242,608	4.4%
765	Cesarean Section W Cc/Mcc	11	57	\$ 205,701	3.8%
870	Septicemia W Mv 96+ Hours	1	31	\$ 201,821	3.7%
460	Spinal Fusion Except Cervical W/O Mcc	4	16	\$ 163,965	3.0%
233	Coronary Bypass W Cardiac Cath W Mcc	2	48	\$ 151,328	2.8%
(blan)	Long-Term Care Facility	27	1,007	\$ 146,518	2.7%
885	Psychoses	14	104	\$ 134,388	2.5%
792	Prematurity W/O Major Problems	4	45	\$ 131,023	2.4%
766	Cesarean Section W/O Cc/Mcc	13	42	\$ 126,160	2.3%
Top 10 Total		134	1,512	\$ 1,754,191	32.1%
Total 2012		479	2,758	\$ 5,471,913	100.0%

Year	2011	Inpatient			% of Total
DRG	DRG Descr	Patients	Days	Total Paid	IP Paid
470	Major Joint Replacement Or Reattachment Of Lower Extremity W/O Mcc	22	74	\$ 517,658	9.5%
885	Psychoses	12	129	\$ 195,918	3.6%
247	Perc Cardiovasc Proc W Drug-Eluting Stent W/O Mcc	5	12	\$ 172,066	3.1%
006	Liver Transplant W/O Mcc	1	13	\$ 138,986	2.5%
(blan)	Long-Term Care Facility	22	773	\$ 126,715	2.3%
775	Vaginal Delivery W/O Complicating Diagnoses	28	60	\$ 118,737	2.2%
652	Kidney Transplant	2	8	\$ 108,250	2.0%
743	Uterine & Adnexa Proc For Non-Malignancy W/O Cc/Mcc	10	12	\$ 104,555	1.9%
792	Prematurity W/O Major Problems	4	37	\$ 97,193	1.8%
766	Cesarean Section W/O Cc/Mcc	11	42	\$ 95,756	1.7%
Top 10 Total		117	1,160	\$ 1,675,834	34.0%
Total 2011		468	2,361	\$ 4,925,659	100.0%

NOTE: Variances in logic from Key Operational Indicators

No lags applied.

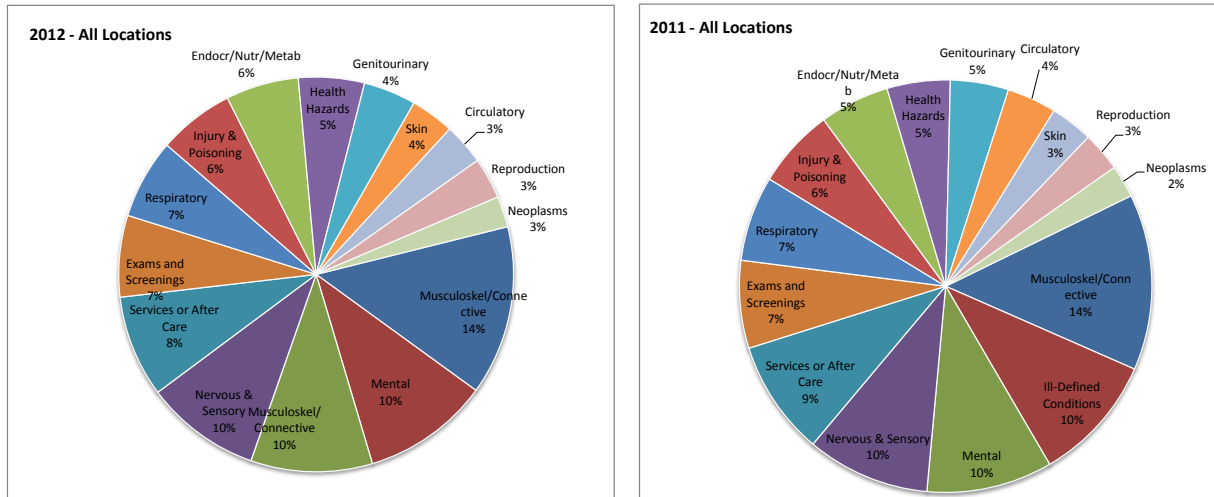
Paid includes only inpatient hospital (facility) costs.

Based on actual admissions, not claims.

Includes newborns.

Encounters by Diagnosis Group

Percent of Total Patient Encounters by Diagnosis Group
Top 15 Diagnosis Groups



Patient Encounters by Site of Service and Diagnosis Group

Year	2012							
Diag Group	Diagnosis Range	Inpatient	Other	Grand Total	Patients per 1000	Encounters per 1000	Paid PMPM	
Musculoskel/Connective	710-739	92	8,939	9,031	351	1,463	\$	48.23
Mental	290-319	62	6,706	6,768	188	1,096	\$	15.76
Ill-Defined Conditions	780-799	197	6,283	6,480	444	1,050	\$	37.01
Nervous & Sensory	320-389	55	6,097	6,152	482	997	\$	26.53
Services or After Care	V50-V59	101	5,324	5,425	168	879	\$	15.64
Exams and Screenings	V70-V89	22	4,322	4,344	449	704	\$	20.25
Respiratory	460-519	71	4,178	4,249	310	688	\$	18.05
Injury & Poisoning	800-999	60	3,986	4,046	234	655	\$	23.24
Endocr/Nutr/Metab	240-279	54	3,831	3,885	234	629	\$	16.20
Health Hazards	V01-V19	2	3,509	3,511	410	569	\$	7.06
Genitourinary	580-629	52	2,747	2,799	165	453	\$	16.89
Skin	680-709	15	2,308	2,323	191	376	\$	6.69
Circulatory	390-459	122	2,084	2,206	156	357	\$	23.36
Reproduction	V20-V29	14	2,183	2,197	192	356	\$	8.14
Neoplasms	140-239	51	1,587	1,638	105	265	\$	24.26
Grand Total		970	64,084	65,054	4,499	11,285	\$	361.30

Year	2011							
Diag Group	Diagnosis Range	Inpatient	Other	Grand Total	Patients per 1000	Encounters per 1000	Paid PMPM	
Musculoskel/Connective	710-739	98	8,864	8,962	346	1,459	\$	50.06
Ill-Defined Conditions	780-799	214	6,280	6,494	450	1,057	\$	40.08
Mental	290-319	53	6,355	6,408	177	1,043	\$	14.96
Nervous & Sensory	320-389	33	6,245	6,278	483	1,022	\$	21.94
Services or After Care	V50-V59	100	5,756	5,856	169	953	\$	15.71
Exams and Screenings	V70-V89	26	4,435	4,461	450	726	\$	18.27
Respiratory	460-519	65	4,271	4,336	324	706	\$	19.08
Injury & Poisoning	800-999	65	3,989	4,054	227	660	\$	19.81
Endocr/Nutr/Metab	240-279	31	3,525	3,556	223	579	\$	9.65
Health Hazards	V01-V19	1	3,212	3,213	369	523	\$	6.20
Genitourinary	580-629	40	2,922	2,962	166	482	\$	18.46
Circulatory	390-459	123	2,396	2,519	160	410	\$	18.37
Skin	680-709	16	2,158	2,174	188	354	\$	5.67
Reproduction	V20-V29	13	1,990	2,003	185	326	\$	5.84
Neoplasms	140-239	33	1,615	1,648	107	268	\$	24.41
Grand Total		911	64,013	64,924	4,430	11,277	\$	338.25

An encounter is counted for each inpatient admission, and for each day of outpatient services.

Variances in logic from Key Operational Indicators include the following:

No lags applied.

Paid includes only inpatient, outpatient hospital and physician costs.

Based on actual admissions, not claims.

Includes newborns.

Inpatient counts may include some outpatient procedures for the same member on the same date of service.

Large Cases by Major Diagnosis Category

2012 Large Case Diagnosis Categories	# of Members	Total Large Case Paid
Diseases Of The Circulatory System	10	\$ 1,141,306
Injury And Poisoning	9	\$ 779,837
Neoplasms	8	\$ 715,339
Diseases Of The Musculoskeletal System And Connective Tissue	7	\$ 530,219
Diseases Of The Digestive System	3	\$ 225,242
Diseases Of The Genitourinary System	3	\$ 160,821
Infectious And Parasitic Diseases	2	\$ 694,748
Endocrine, Nutritional And Metabolic Diseases, And Immunity Disorders	2	\$ 442,696
Supplementary Classification Of Factors Influencing Health Status	2	\$ 216,963
Diseases Of The Respiratory System	2	\$ 128,367
Mental Disorders	2	\$ 107,387
Diseases Of The Nervous System And Sense Organs	1	\$ 128,584
Diseases Of The Skin And Subcutaneous Tissue	1	\$ 118,514
Complications Of Pregnancy, Childbirth, And The Puerperium	1	\$ 54,372
Symptoms, Signs, And Ill-Defined Conditions	1	\$ 54,271
Total Large Cases 2012	54	\$ 5,498,666

2011 Large Case Diagnosis Categories	# of Members	Total Large Case Paid
Diseases Of The Musculoskeletal System And Connective Tissue	12	\$ 1,008,575
Diseases Of The Circulatory System	9	\$ 797,496
Diseases Of The Digestive System	9	\$ 815,340
Neoplasms	9	\$ 915,686
Supplementary Classification Of Factors Influencing Health Status	4	\$ 384,180
Diseases Of The Genitourinary System	4	\$ 231,198
Injury And Poisoning	4	\$ 358,679
Mental Disorders	3	\$ 206,718
Diseases Of The Respiratory System	2	\$ 206,980
Endocrine, Nutritional And Metabolic Diseases, And Immunity Disorders	1	\$ 163,894
Complications Of Pregnancy, Childbirth, And The Puerperium	1	\$ 55,458
Diseases Of Blood And Blood-Forming Organs	1	\$ 210,179
Symptoms, Signs, And Ill-Defined Conditions	1	\$ 54,005
Total Large Cases 2011	60	\$ 5,408,388

Large Cases Over \$50,000

Large Cases as a % of Total Cases					
Plan Year	Patients	Encounters	Inpatient Days	Total Services	Total Paid
2012	0.9%	4.1%	22.8%	6.8%	20.5%
2011	1.0%	5.2%	24.3%	8.9%	21.7%

01/01/2012 - 12/31/2012

1	\$ 642,028	Acute Lymphoid Leukemia Without Mention Of Remission; Acute Respiratory Failure; Septicemia Due To Escherichia Coli (E. Coli)
2	\$ 372,634	Lipidoses; Type II Diabetes Mellitus; Encounter For Long-Term Use Of Other Medications (#8 in 2011)
3	\$ 288,736	Acute Myocardial Infarction, Subendocardial Infarction, Initial Episode Of Care (#4 in 2011)
4	\$ 181,543	Dissecting Aortic Aneurysm (Any Part), Thoracic
5	\$ 151,927	Malignant Neoplasm Of Bronchus And Lung; Malignant Neoplasm Of Brain And Spinal Cord; Antineoplastic Chemotherapy
6	\$ 137,964	Malignant Melanoma Of Skin Of Trunk; Secondary Malignant Neoplasm Of Lymph Nodes; Hematoma Complicating A Procedure
7	\$ 134,274	Displacement Of Cervical Intervertebral Disc Without Myelopathy
8	\$ 128,584	Partial Epilepsy With Impairment Of Consciousness, With Intractable Epilepsy
9	\$ 126,718	Pneumonia; Plasma Cell Leukemia Without Mention Of Remission; Encounter For Antineoplastic Chemotherapy (#2 in 2011)
10	\$ 125,630	Coronary Atherosclerosis Of Native Coronary Artery; Hemorrhage Of Gastrointestinal Tract; Unspecified Acute Renal Failure (#13 in 2011)
11	\$ 125,590	Acquired Spondylolisthesis; Fracture Of Sacrum And Coccyx Without Mention Of Spinal Cord Injury
12	\$ 123,591	Neoplasm Of Uncertain Behavior Of Brain And Spinal Cord
13	\$ 118,515	Cellulitis And Abscess Of Leg; Morbid Obesity; Asthma, Unspecified, With (Acute) Exacerbation (#7 in 2011)
14	\$ 112,966	Chronic Pancreatitis; Gastrojejunal Ulcer With Hemorrhage; Unspecified Constipation
15	\$ 112,727	Displacement Of Cervical Intervertebral Disc Without Myelopathy (#30 in 2011)
16	\$ 111,244	Thoracoabdominal Aneurysm Without Mention Of Rupture
17	\$ 105,544	Complete Disruption Of Kidney Parenchyma, With Open Wound Into Cavity
18	\$ 91,537	Malignant Neoplasm Of Prostate; Radiotherapy
19	\$ 90,309	Malignant Neoplasm Of Other Specified Sites Of Bladder; Leiomyoma Of Uterus
20	\$ 90,244	Single Liveborn, Born In Hospital; Preterm Infants, 1,500-1,749 Grams
21	\$ 85,069	Acute On Chronic Diastolic Heart Failure
22	\$ 83,488	Coronary Atherosclerosis Of Native Coronary Artery
23	\$ 79,769	Malignant Neoplasm Of Tonsil; Malignant Neoplasm Of Lymph Nodes Of Head
24	\$ 76,135	Complications Of Transplanted Kidney
25	\$ 73,988	Intestinal Obstruction; Sterilization
26	\$ 72,726	Aortic Valve Disorders
27	\$ 70,576	Perforation Of Intestine; Mechanical Complication Due To Other Implant And Internal Device (#27 in 2011)
28	\$ 70,062	Alcohol Withdrawal; Opioid Type Dependence; Major Depressive Disorder, Single Episode
29	\$ 69,166	Acute Respiratory Failure; Unspecified Diastolic Heart Failure
30	\$ 68,996	Benign Neoplasm Of Cerebral Meninges
31	\$ 68,288	Cerebral Aneurysm, Nonruptured
32	\$ 67,069	Displacement Of Lumbar Intervertebral Disc; Type II Diabetes Mellitus
33	\$ 66,451	Portal Vein Thrombosis; Acute Vascular Insufficiency Of Intestine
34	\$ 64,179	Heart Contusion Without Mention Of Open Wound Into Thorax
35	\$ 59,200	Extrinsic Asthma, Unspecified
36	\$ 59,008	Knee Replacement
37	\$ 58,790	Closed Trimalleolar Fracture
38	\$ 58,129	Cerebral Aneurysm, Nonruptured
39	\$ 57,670	Postlaminectomy Syndrome, Lumbar Region
40	\$ 57,261	Malignant Neoplasm Of Other Specified Sites Of Female Breast
41	\$ 57,234	Infantile Autism, Current Or Active State (# 84 in 2011)
42	\$ 57,013	Unspecified Ulcerative Colitis
43	\$ 56,648	Brachial Neuritis Or Radiculitis Nos
44	\$ 55,554	Degeneration Of Lumbar Or Lumbosacral Intervertebral Disc
45	\$ 55,262	Calculus Of Gallbladder And Bile Duct Without Cholecystitis, With Obstruction
46	\$ 55,167	Endometriosis Of Uterus
47	\$ 54,421	Prolapse Of Vaginal Vault After Hysterectomy
48	\$ 54,371	Severe Pre-Eclampsia, With Delivery
49	\$ 54,346	Intervertebral Lumbar Disc Disorder With Myelopathy, Lumbar Region
50	\$ 54,271	Urinary Frequency
51	\$ 52,720	Intestinal Infections Due To Clostridium Difficile
52	\$ 51,947	Malignant Neoplasm Of Prostate
53	\$ 51,232	Other Specified Benign Mammary Dysplasias
54	\$ 50,155	Manic-Depressive Psychosis (#19 in 2011)
Total \$ 5,498,666		

Large Cases Over \$50,000

01/01/2011 - 12/31/2011

1	\$	232,699	Alcoholic Cirrhosis Of Liver
2	\$	211,647	Plasma Cell Leukemia In Remission (#9 in 2012)
3	\$	210,179	Immune Thrombocytopenic Purpura
4	\$	187,459	Specified Rehabilitation Procedure (#3 in 2012)
5	\$	183,430	Malignant Neoplasm Of Breast (Female), Unspecified Site
6	\$	181,150	Localized Osteoarthritis Not Specified Whether Primary Or Secondary, Lower Leg
7	\$	164,007	Localized Osteoarthritis Not Specified Whether Primary Or Secondary, Lower Leg (#13 in 2012)
8	\$	163,894	Lipidoses (#2 in 2012)
9	\$	148,559	Pneumonia, Organism Unspecified
10	\$	147,808	Unspecified Hypertensive Renal Disease With Renal Failure
11	\$	147,399	Acute On Chronic Systolic Heart Failure
12	\$	144,158	Drug Withdrawal Syndrome
13	\$	131,796	Coronary Atherosclerosis Of Native Coronary Artery (#10 in 2012)
14	\$	118,129	Closed Fracture Of Unspecified Part Of Femur
15	\$	105,022	Other Acquired Deformities Of Knee
16	\$	100,046	Malignant Neoplasm Of Liver, Primary
17	\$	97,410	Other Postoperative Infection
18	\$	95,527	Secondary Malignant Neoplasm Of Liver
19	\$	94,252	Major Depressive Disorder, Single Episode, Severe, Without Mention Of Psychotic Behavior (#54 in 2012)
20	\$	81,975	Encounter For Immunotherapy For Neoplastic Condition
21	\$	80,268	Coronary Atherosclerosis Of Native Coronary Artery
22	\$	80,123	Infection And Inflammatory Reaction Due To Internal Joint Prosthesis
23	\$	79,510	Malignant Neoplasm Of Upper-Outer Quadrant Of Female Breast
24	\$	71,007	Unspecified Personal History Presenting Hazards To Health
25	\$	70,615	Calculus Of Gallbladder With Other Cholecystitis, Without Mention Of Obstruction
26	\$	70,502	Incisional Hernia Without Mention Of Obstruction Or Gangrene
27	\$	69,993	Digestive System Complication (#27 in 2012)
28	\$	68,632	Acute Respiratory Failure
29	\$	68,278	Chondromalacia
30	\$	67,909	Degeneration Of Cervical Intervertebral Disc (#15 in 2012)
31	\$	65,799	Calculus Of Kidney
32	\$	65,002	Localized Osteoarthritis Not Specified Whether Primary Or Secondary, Shoulder Region
33	\$	64,230	Localized Osteoarthritis Not Specified Whether Primary Or Secondary, Pelvic Region And Thigh
34	\$	63,620	Coronary Atherosclerosis Of Native Coronary Artery
35	\$	63,257	Malignant Neoplasm Of Breast (Female), Unspecified Site
36	\$	63,198	Diverticulitis Of Colon (Without Mention Of Hemorrhage)
37	\$	63,049	Localized Osteoarthritis Not Specified Whether Primary Or Secondary, Lower Leg
38	\$	63,017	Complications Of Transplanted Kidney
39	\$	62,323	Pathologic Fracture Of Vertebrae
40	\$	60,499	Localized Osteoarthritis Not Specified Whether Primary Or Secondary, Pelvic Region And Thigh
41	\$	60,159	Encounter For Antineoplastic Chemotherapy
42	\$	58,421	Chronic Obstructive Asthma, With (Acute) Exacerbation
43	\$	58,273	Other Dyspnea And Respiratory Abnormalities
44	\$	57,854	Infantile Autism, Current Or Active State
45	\$	57,462	Diaphragmatic Hernia Without Mention Of Obstruction Or Gangrene
46	\$	56,293	Malignant Neoplasm Of Breast (Female), Unspecified Site
47	\$	55,458	Maternal Mental Disorders, Antepartum
48	\$	55,091	Secondary Localized Osteoarthritis, Lower Leg
49	\$	54,969	Malignant Neoplasm Of Middle Lobe, Bronchus, Or Lung
50	\$	54,613	Major Depressive Disorder, Recurrent Episode, Severe, Without Mention Of Psychotic Behavior
51	\$	54,588	Single Liveborn, Born In Hospital, Delivered Without Mention Of Cesarean Delivery
52	\$	54,413	Unspecified Ventral Hernia Without Mention Of Obstruction Or Gangrene
53	\$	54,112	Calculus Of Kidney
54	\$	54,005	Other Alteration Of Consciousness
55	\$	53,013	Calculus Of Kidney
56	\$	52,879	Acute Myocardial Infarction, Subendocardial Infarction, Initial Episode Of Care
57	\$	52,594	Coronary Atherosclerosis Of Native Coronary Artery
58	\$	52,500	Paroxysmal Ventricular Tachycardia
59	\$	52,301	Unspecified Constipation
60	\$	52,016	Other And Unspecified Disc Disorder Of Lumbar Region
Total		\$ 5,408,388	

Emergency Room Utilization

Dane County 2012

Visits per 1,000 Members	Plan Paid PMPM	Member Paid PMPM
179	\$ 14.95	\$ 0.62
***	\$ 3.47	\$ -
179	\$ 18.42	\$ 0.62

Emergency Room Visits

Facility
Professional
Total ER

Average Paid per ER Visit (facility)

\$ 1,004

Dane County 2011

Visits per 1,000 Members	Plan Paid PMPM	Member Paid PMPM
182	\$ 17.22	\$ 0.29
***	\$ 3.22	\$ -
182	\$ 20.44	\$ 0.29

\$ 1,133

PPIC - Total Organization 2012

Visits per 1,000 Members	Plan Paid PMPM	Member Paid PMPM
142	\$ 13.34	\$ 1.21
***	\$ 3.12	\$ 0.03
142	\$ 16.46	\$ 1.24

\$ 1,396

ER Facilities used in 2012

2012 Facility	Total Visits	% of Visits
MERITER HOSPITAL INC	564	51.3%
UNIV OF WISCONSIN HOSPITAL & CLINICS	246	22.4%
STOUGHTON HOSPITAL	39	3.5%
ST MARYS HOSPITAL MEDICAL CTR	32	2.9%
SAUK PRAIRIE MEMORIAL HOSPITAL	30	2.7%
FORT MEMORIAL HOSPITAL	26	2.4%
COLUMBUS COMMUNITY HOSPITAL	18	1.6%
UW HEALTH PARTNERS WATERTOWN REG MED C	12	1.1%
EDGERTON HOSPITAL AND HEALTH SERVICES	11	1.0%
DIVINE SAVIOR HEALTHCARE	8	0.7%
ST CLARE HOSPITAL	8	0.7%
UPLAND HILLS HEALTH INC	7	0.6%
RIVERVIEW HOSPITAL	5	0.5%
HOWARD YOUNG MEDICAL CENTER	4	0.4%
SOUTHWEST HEALTH CENTER	4	0.4%
Remaining 86 Providers	86	7.8%
Total ER Visits - 2012	1,100	100.0%

ER Facilities used in 2011

2011 Facility	Total Visits	% of Visits
MERITER HOSPITAL INC	473	42.2%
UNIV OF WISCONSIN HOSPITAL & CLINICS	278	24.8%
ST MARYS HOSPITAL MEDICAL CTR	67	6.0%
STOUGHTON HOSPITAL	37	3.3%
SAUK PRAIRIE MEMORIAL HOSPITAL	34	3.0%
FORT MEMORIAL HOSPITAL	26	2.3%
COLUMBUS COMMUNITY HOSPITAL	20	1.8%
ST CLARE HOSPITAL	18	1.6%
DIVINE SAVIOR HEALTHCARE	13	1.2%
EDGERTON HOSPITAL AND HEALTH SERVICES	11	1.0%
MERCY HEALTH SYSTEM	8	0.7%
MONROE CLINIC HOSPITAL	7	0.6%
UPLAND HILLS HEALTH INC	7	0.6%
BEAVER DAM COMMUNITY HOSPITAL	5	0.4%
UW HEALTH PARTNERS WATERTOWN REG MED CTR	5	0.4%
Remaining 84 Providers	112	10.0%
Total ER Visits - 2011	1,121	100.0%

2012 Diagnosis Classification	# of Visits	# of Total Paid
Ill-Defined Conditions	349	42.1%
Injury & Poisoning	267	18.3%
Respiratory	93	5.5%
Musculoskel/Connective	62	2.9%
Nervous & Sensory	61	2.5%
Genitourinary	48	5.5%
Digestive	46	8.5%
Mental	41	2.9%
Circulatory	34	5.4%
Infectitious & Parasitic	22	1.4%
Pregnancy, Etc.	21	2.0%
Endocr/Nutr/Metab	18	1.2%
Skin	17	0.7%
Exams and Screenings	5	0.1%
Blood & BFO	4	0.4%
Health Hazards	3	0.2%
Services or After Care	3	0.0%
Neoplasms	2	0.0%
Influencing Condition	2	0.2%
Reproduction	1	0.0%
Other Circumstances	1	0.1%
Grand Total	1,100	100.0%

2011 Diagnosis Classification	# of Visits	# of Total Paid
Ill-Defined Conditions	358	44.4%
Injury & Poisoning	240	15.2%
Respiratory	101	6.1%
Musculoskel/Connective	86	5.4%
Nervous & Sensory	74	3.7%
Genitourinary	53	6.5%
Digestive	51	7.4%
Mental	41	2.8%
Circulatory	31	2.9%
Infectitious & Parasitic	25	2.3%
Skin	16	0.5%
Pregnancy, Etc.	16	0.9%
Endocr/Nutr/Metab	9	1.0%
Exams and Screenings	7	0.3%
Blood & BFO	4	0.2%
Other Circumstances	3	0.2%
Health Hazards	2	0.2%
Services or After Care	2	0.0%
Influencing Condition	1	0.0%
Neoplasms	1	0.0%
Grand Total	1,121	100.0%

Urgent Care Utilization

Dane County 2012

Visits per 1,000 Members	Plan Paid PMPM	Member Paid PMPM
384	\$ 4.99	\$ 0.12

Urgent Care Visits

Dane County 2011

Visits per 1,000 Members	Plan Paid PMPM	Member Paid PMPM
382	\$ 5.09	\$ 0.01

PPIC - Total Organization 2012

Visits per 1,000 Members	Plan Paid PMPM	Member Paid PMPM
418	\$ 3.53	\$ 0.62

Average Plan Paid per Urgent Care Visit

\$ 156

\$ 160

\$ 100

Urgent Care Facilities used in 2012

2012 Facility	Total Visits	% of Visits
UNIV OF WI MEDICAL FOUNDATION INC	1625	68.6%
STOUGHTON HOSPITAL ASSOCIATION	312	13.2%
COLUMBUS COMMUNITY HOSPITAL	71	3.0%
SAUK PRAIRIE MEMORIAL HOSPITAL INC	69	2.9%
EDGERTON HOSPITAL AND HEALTH SERVIC	62	2.6%
FORT HEALTHCARE INC	37	1.6%
DEAN HEALTH SYSTEMS INC	34	1.4%
DIVINE SAVIOR HEALTHCARE	29	1.2%
UPLANDS HILLS HEALTH INC	16	0.7%
FORT ATKINSON EMERGENCY PHYSICIANS	12	0.5%
Remaining 57 Providers	103	4.3%
Total UC Visits -2012	2,370	100.0%

Urgent Care Facilities used in 2011

2011 Facility	Total Visits	% of Visits
UNIV OF WI MEDICAL FOUNDATION INC	1629	69.3%
STOUGHTON HOSPITAL ASSOCIATION	252	10.7%
COLUMBUS COMMUNITY HOSPITAL	74	3.1%
SAUK PRAIRIE MEMORIAL HOSPITAL INC	72	3.1%
DEAN HEALTH SYSTEMS INC	60	2.6%
EDGERTON HOSPITAL AND HEALTH SERVI	51	2.2%
FORT HEALTHCARE INC	43	1.8%
DIVINE SAVIOR HEALTHCARE	28	1.2%
UPLANDS HILLS HEALTH INC	15	0.6%
MONROE CLINIC	15	0.6%
Remaining 67 Providers	111	4.7%
Total UC Visits - 2011	2,350	100.0%

2012 Diagnosis Classification	# of Visits	# of Total Paid
Respiratory	573	20.6%
Injury & Poisoning	492	27.3%
Ill-Defined Conditions	425	19.2%
Nervous & Sensory	284	8.6%
Musculoskel/Connective	152	5.6%
Skin	132	4.9%
Infectitious & Parasitic	94	3.0%
Genitourinary	76	3.4%
Digestive	50	1.9%
Health Hazards	33	1.5%
Mental	14	0.7%
Circulatory	11	0.5%
Endocr/Nutr/Metab	9	0.7%
Blood & BFO	6	0.2%
Exams and Screenings	5	0.2%
Pregnancy, Etc.	5	0.6%
Neoplasms	3	0.4%
Influencing Condition	2	0.7%
Services or After Care	2	0.1%
Other Circumstances	1	0.0%
Reproduction	1	0.0%
Grand Total	2,370	100.0%

2011 Diagnosis Classification	# of Visits	# of Total Paid
Respiratory	673	22.3%
Ill-Defined Conditions	398	19.3%
Injury & Poisoning	380	23.0%
Nervous & Sensory	304	9.4%
Musculoskel/Connective	171	6.0%
Skin	117	4.5%
Genitourinary	92	4.4%
Infectitious & Parasitic	77	2.2%
Digestive	43	1.3%
Exams and Screenings	22	3.1%
Health Hazards	21	0.8%
Circulatory	17	2.0%
Mental	8	0.4%
Other Circumstances	7	0.5%
Endocr/Nutr/Metab	6	0.2%
Pregnancy, Etc.	5	0.3%
Services or After Care	3	0.1%
Blood & BFO	3	0.1%
Influencing Condition	2	0.2%
Perinatal Period	1	0.0%
Grand Total	2,350	100.0%

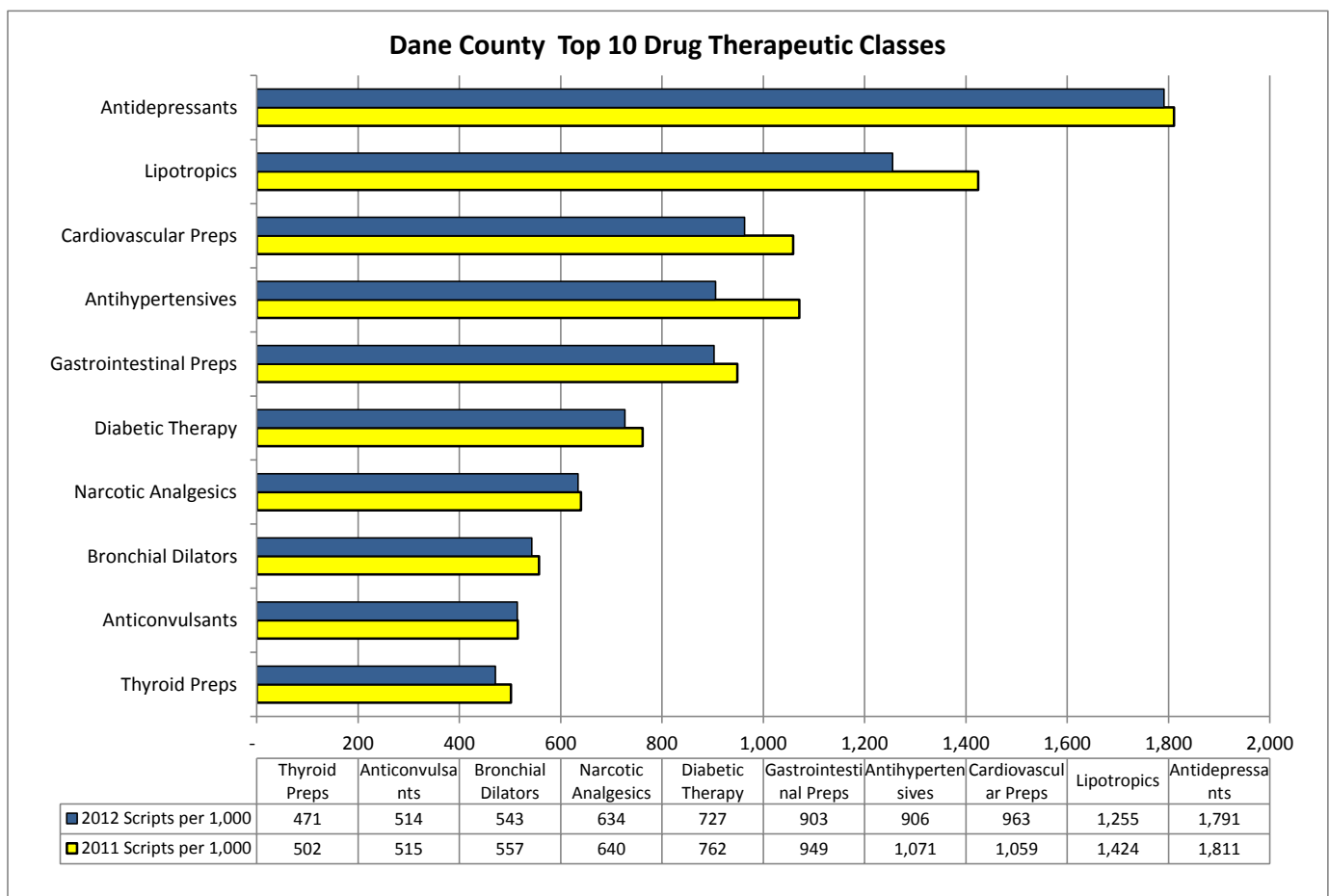
Pharmacy Profile

	2012 RX Claims	PPIC Plan			Avg Cost per Script	2012 % of Scripts	2011 % of Scripts
		Paid	Member Paid	Total Costs			
Brand Prescriptions	18,503	\$ 4,340,457	\$ 280,206	\$ 4,620,664	\$ 249.73	19.1%	21.1%
Generic Prescriptions	78,497	\$ 1,179,620	\$ 470,211	\$ 1,649,831	\$ 21.02	80.9%	78.9%
Total 2012 Prescriptions	97,000	\$ 5,520,078	\$ 750,417	\$ 6,270,495	\$ 64.64	100.0%	100.0%

2012 Per Member per Month \$ **74.53** \$ **10.13** \$ **84.66**

2011 Per Member per Month \$ **76.10** \$ **8.52** \$ **84.63**

Note: Specialty Pharmacy items including diabetic supplies and respiratory aids are not included in this total.



Formulary, Maintenance Drug List and Tablet Splitting Information Located at:
<http://www.pplusic.com/providers/pharmacy>

Pharmacy Profile

Top Medications

Top 20 Drug Therapeutic Classes by % Total Paid

Therapeutic Class	% of Total Paid
MISCELLANEOUS	10%
DIABETIC THERAPY	10%
LIPO TROPICS	8%
BRONCHIAL DILATORS	8%
ANTIARTHRITICS	8%
PSYCHOSTIMULANTS-ANTIDEPRESSANTS	8%
ATARACTICS-TRANQUILIZERS	4%
GLUCOCORTICOIDS	4%
AMPHETAMINE PREPARATIONS	4%
ANTI-ULCER PREPS/GASTROINTESTINAL PREPS	3%
NON-NARCOTIC ANALGESICS	3%
SYSTEMIC CONTRACEPTIVES	3%
ANTINEOPLASTICS	3%
ANTIVIRALS	2%
ALL OTHER DERMATOLOGICALS	2%
TOPICAL NASAL AND OTIC PREPARATIONS	2%
ANTICOAGULANTS	2%
CNS STIMULANTS	2%
ANTISPASMODIC AND ANTICHOLINERGIC AGENTS	2%
OPHTHALMIC PREPARATIONS	1%
Subtotal	88%
Remainder of Meds	12%
Grand Total	100%

Top 20 Medications by Total Scripts

Drug Tier	Drug Name	Therapeutic Class	Scripts	% of Total Rx Claims
Generic	PRILOSEC OTC	ANTI-ULCER PREPS/GASTROINTESTINAL PREPS	3,838	4.0%
Generic	SIMVASTATIN	LIPO TROPICS	2,766	2.9%
Generic	LISINAPRIL	OTHER ANTIHYPERTENSIVES	1,891	1.9%
Brand	CRESTOR	LIPO TROPICS	1,513	1.6%
Generic	LEVOTHYROXINE SODIUM	THYROID PREPS	1,469	1.5%
Generic	FLUTICASON PROPIONATE	GLUCOCORTICOIDS	1,404	1.4%
Generic	HYDROCHLOROTHIAZIDE	DIURETICS	1,286	1.3%
Generic	HYDROCODONE-ACETAMINOPHEN	NARCOTIC ANALGESICS	1,277	1.3%
Generic	SERTRALINE HCL	PSYCHOSTIMULANTS-ANTIDEPRESSANTS	1,277	1.3%
Generic	BUPROPION XL	PSYCHOSTIMULANTS-ANTIDEPRESSANTS	1,246	1.3%
Generic	AZITHROMYCIN	ERYTHROMYCINS	1,214	1.3%
Generic	AMLODIPINE BESYLATE	OTHER CARDIOVASCULAR PREPS	1,206	1.2%
Generic	GABAPENTIN	ANTICONVULSANTS	1,163	1.2%
Generic	CITALOPRAM HBR	PSYCHOSTIMULANTS-ANTIDEPRESSANTS	1,154	1.2%
Generic	TRAZODONE HCL	PSYCHOSTIMULANTS-ANTIDEPRESSANTS	997	1.0%
Brand	VENTOLIN HFA	BRONCHIAL DILATORS	948	1.0%
Generic	LOSARTAN POTASSIUM	OTHER ANTIHYPERTENSIVES	946	1.0%
Generic	FLUOXETINE HCL	PSYCHOSTIMULANTS-ANTIDEPRESSANTS	925	1.0%
Generic	ATENOLOL	OTHER CARDIOVASCULAR PREPS	900	0.9%
Generic	LORATADINE	ANTIHISTAMINES	900	0.9%
Subtotal			28,320	29.2%
Remainder of Meds			68,680	70.8%
Grand Total			97,000	100.0%

2012	Reimbursement Type Description	Paid Amount	Members Participating
	GHB Approved Class	\$5,078	52
	Weight Watchers	\$3,330	30
	Eat Healthy Rebate	\$15,295	82
	HRA Assessment	\$25,213	1,011
	HRA Lifestyle Management Program	\$975	13
	Health Club Membership	\$74,768	488
Total Paid to Members		\$124,660	1,676

2012	Employer Health and Wellness Activities
	Health Assessment: 1,167 completions
	Coaching Sessions: 772 (Sept. 1, 2011- Aug.31st, 2012)
	Flu Shots: Shots- 617 = \$16,042.
	Mist- 28 = \$840.
	Wellness stipend



PHYSICIANS PLUS HEDIS® 2012 KEY FINDINGS

BACKGROUND

- Healthcare Effectiveness Data and Information Set (HEDIS) is conducted annually by the National Committee for Quality Assurance (NCQA).
- HEDIS measures performance on effectiveness and access to care among 90% of U.S. health plans.
- Physicians Plus collects and monitors performance on 45 measures related to preventive health screenings, condition management, testing and treatment, and immunizations.
- The following results show Physicians Plus Commercial (HMO/POS) performance compared to national benchmarks published in NCQA's Quality Compass® 2012.
- Results reflect care provided in calendar year 2011 and reported in 2012.

YEAR-TO-YEAR TRENDS

- Four measures (8%) showed a statistically significant improvement over reporting year (RY) 2011 rates.

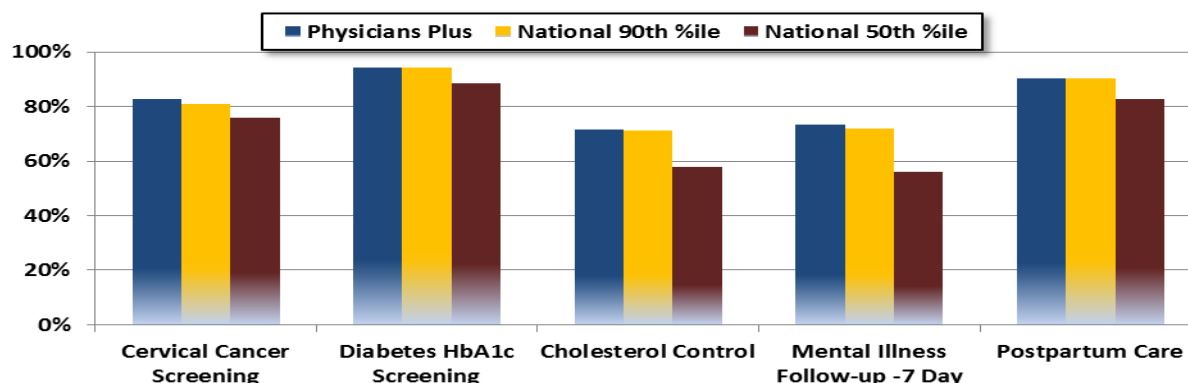
NATIONAL BENCHMARKS

- Forty measures (83%) are at or above the NCQA 50th percentile.
- Eight measures (17%) are at or above the NCQA 90th percentile.

LOCAL BENCHMARKS

- Physicians Plus had the highest performance among our local competitors in five measures. Local competitors include Dean, GHC, and Unity.

SELECT RESULTS



Full results are available from the Clinical Quality Improvement department at (608) 417-4547.

HEDIS is a registered trademark of the National Committee for Quality Assurance (NCQA).

NCQA HEDIS Compliance Audit™ is a trademark of the National Committee for Quality Assurance (NCQA).

The source for data contained in this publication is Quality Compass® 2012 and is used with the permission of the National Committee for Quality Assurance (NCQA). Quality Compass 2012 includes certain CAHPS data. Any data display, analysis, interpretation, or conclusion based on these data is solely that of the authors, and NCQA specifically disclaims responsibility for any such analysis, interpretation, or conclusion. Quality Compass is a registered trademark of NCQA. CAHPS® is a registered trademark of the Agency for Healthcare Research and Quality (AHRQ).

HEDIS® 2013 Employer-Specific Findings

(Based on services provided to members in 2012)

Dane County

HEDIS Measure	Employer Compliant Members 2013	Employer Eligible Members 2013	Employer Member Compliance 2013	Pplus Members Compliance 2013	National 50th Percentile 2012	National 90th Percentile 2012
Adolescent Well-Care Visits	392	920	42.6%	42.4%	40.3%	61.3%
Adult's Access to Preventive/Ambulatory Health Services	3413	3498	97.6%	96.5%	94.7%	96.6%
Breast Cancer Screening	953	1208	78.9%	77.5%	68.1%	76.5%
Cervical Cancer Screening	1295	1600	80.9%	83.2%	75.9%	81.1%
Colorectal Cancer Screening	837	1366	61.3%	62.2%	58.4%	71.7%
Well-Child Visits 3 - 6 Years	43	48	89.6%	86.0%	72.3%	85.8%
Well-Child Visits First 15 Months	221	289	76.5%	77.7%	78.7%	88.5%

* National Percentile data from HEDIS 2012 - updated percentiles available in Fall 2013

Adolescent Well-Care Visits - percentage of adolescents 12 to 21 years of age who had one or more well-care visits with a primary care physician or obstetrics and gynecology physician during the year.

Adults' Access to Preventive/Ambulatory Health Services - percentage of members 20 through 65 years and older who had an outpatient or preventive care office visit with their physician.

Breast Cancer Screening - percentage of women 40 through 69 years of age who had a mammogram within the past two years.

Cervical Cancer Screening - percentage of women 21 through 64 years of age who received a Pap test during the past three years.

Colorectal Cancer Screening - percentage of members 50 through 75 years of age who had appropriate screening for colorectal cancer.

Well-Child Visits 3 - 6 Years - percentage of children 3, 4, 5 and 6 years of age who received at least one well-child visit with a primary care physician during the year.

Well-Child Visits First 15 Months - percentage of children who had an appropriate number of well-child visits by the time they turned 15 months of age.

More information on the entire set of HEDIS measures is available at www.qualitymeasures.ahrq.gov.

DIAGNOSIS GROUPS

Blood and Blood-Forming Organs

Diseases of the blood, blood cells, and spleen. Includes all types of anemia, hemophilia, and other coagulation or bleeding conditions.

Congenital Anomalies

Birth defects, and other abnormal conditions, deformities, or absences present at birth. Includes spina bifida, heart defects, cleft palate or lip, club foot, and Down's syndrome.

Circulatory System

Diseases of the heart, cardiac and pulmonary blood vessels, brain blood vessels, other blood vessels, and diseases of the veins and lymphatics. Includes rheumatic conditions, hypertension, heart attack, stroke and the effects of stroke, heart disease, valve disorders, heart or brain arterial blockage and hemorrhages, atherosclerosis, aneurysms, embolisms, thrombosis, peripheral vascular disease, phlebitis, varicose veins, hemorrhoids, and lymphedema.

Digestive System

Diseases of the oral cavity, salivary glands, jaw, esophagus, stomach, duodenum, intestines, and peritoneum. Includes tooth and gum disorders, TMJ, conditions of the tongue and lips, ulcers, appendicitis, abdominal hernias, enteritis and colitis, diverticulosis, peritonitis, polyps, and diseases of the liver, gallbladder, and pancreas.

Endocrine, Nutritional, and Metabolic Diseases, and Immunity Disorders

Diseases of the thyroid and other hormone-secreting endocrine glands, nutritional deficiencies, and other metabolic or immunity disorders. Includes hyperthyroid, goiter, diabetes, adrenal and pituitary disorders, ovarian or testicular dysfunction, cystic fibrosis, and obesity.

Exams and Screenings

General medical exams, observation and evaluation, special exams, and special screenings. Includes routine exams, vision and hearing exams, gynecological exams, allergy tests, pre-operative exams, screenings for viral and infectious disease, screening mammography, screening for mental disorders, and other screenings.

External Cause of Injury

Classifies the events, circumstances, or conditions that are the causes of injury, poisoning, or other adverse affects. Includes accidents, accidental poisonings, misadventures, falls, fires, natural and industrial disasters, and the late effects of accidental injuries. Includes drowning, suffocation, hypersensitivity to therapeutic drugs, suicide and self-inflicted injury, legal interventions, war, and injuries undetermined whether accidentally or purposefully inflicted.

Genitourinary System

Diseases of the kidneys, ureter, bladder, urethra, male and female reproductive and genital organs, and breast disorders. Includes kidney infections, stones, and failure, bladder or other urinary tract infections and disorders, male and female infertility, male and female internal reproductive

conditions, male and female external genital disorders, menopausal disorders, prostate conditions, endometriosis, and breast cysts and fibrosis.

Health Hazards

Exposure to or carrier of a communicable disease, isolation and other prophylactic measures needed because of infection, and personal or family history of diseases or disorders.

III-Defined Conditions

Symptoms, signs, abnormal test results, investigational procedures, and conditions that have no other better diagnosis classification, are of unknown origin, or are of a transient nature. May involve any body system. May include fever, fatigue, headache, nausea, vomiting, pain, abnormal blood or urine tests, abnormal cardiovascular or radiological exams. The table below identifies the major diagnosis groups in this category.

Diagnosis	Description
780	General Symptoms
781	Symptoms Involving Nervous And Musculoskeletal Systems
782	Symptoms Involving Skin And Other Integumentary Tissue
783	Symptoms Concerning Nutrition, Metabolism, And Development
784	Symptoms Involving Head And Neck
785	Symptoms Involving Cardiovascular System
786	Symptoms Involving Respiratory System And Other Chest Symptoms
787	Symptoms Involving Digestive System
788	Symptoms Involving Urinary System
789	Other Symptoms Involving Abdomen And Pelvis
790	Nonspecific Findings On Examination Of Blood
791	Nonspecific Findings On Examination Of Urine
792	Nonspecific Abnormal Findings In Other Body Substances
793	Nonspecific Abnormal Findings On Radiological And Other Examination Of Body Structure
794	Nonspecific Abnormal Results Of Function Studies
795	Nonspecific Abnormal Histological And Immunological Findings
796	Other Nonspecific Abnormal Findings
797	Senility Without Mention Of Psychosis
798	Sudden Death, Cause Unknown
799	Other III-Defined And Unknown Causes Of Morbidity And Mortality

Infectious and Parasitic Diseases

Diseases generally recognized as communicable or transmissible, or of unknown but possibly infectious origin. These include food poisoning, animal- or insect-borne diseases, bacterial diseases (e.g. strep, e. coli), viral diseases (e.g. herpes, HIV, hepatitis, conjunctivitis, warts), and venereal diseases.

Influencing Conditions

Diagnoses or problems such as behavioral problems, sensorial problems, organ transplant status, artificial body openings, and other problems with the body. Also includes post-surgical states such as pacemaker status, renal dialysis status, cataract extraction status, and amputation status.

Injury and Poisoning

Includes fractures, dislocation, sprains and strains of joints and muscles, internal injuries to the head, thorax, abdomen and pelvis, open wounds, injuries to blood vessels, contusions, crushing injuries, foreign objects, burns, injury to the nerves or spinal cord, trauma, poisoning, complications of medical care, and other effects of external causes.

Mental Disorders

Major types are psychoses, neurotic and personality disorders, and mental retardation. Includes manic disorders, anxiety disorders, depression, alcohol or other substance abuse, eating disorders, organic brain damage and dementia, autism, attention deficit or hyperactivity disorders, developmental delays in speech, language, reading, or learning, and all mental subnormalities.

Musculoskeletal/Connective

Diseases or conditions of the muscles, other connective tissues (such as bursa, ligaments, tendons), joints, spine, other bones, and cartilage. Includes arthritis, rheumatoid arthritis, osteoarthritis, rheumatism, bursitis, joint derangements, spinal disc degeneration, spine disorders and pain, curvature of the spine, osteoporosis, and acquired deformities.

Neoplasms

Diseases commonly referred to as cancers. These cancers may be malignant, benign, carcinoma in situ, or of uncertain behavior or nature. Includes all primary, secondary, or unspecified cancers.

Nervous System and Sense Organs

Diseases of the brain and central nervous system, nerves and peripheral nervous system, eye, and ear. Includes meningitis, encephalitis, Alzheimer's disease, Parkinson's disease, Multiple Sclerosis, cerebral palsy, epilepsy, migraine, muscular dystrophy, all hearing and vision defects or diseases, and all diseases of the interior and exterior of the ear and eye.

Newborn

Classifications of infants occupying hospital beds: single, twin, other multiple, live born status of mates, born in hospital or not, and normal delivery or delivered by cesarean.

Other Circumstances

Personal or family circumstances which may make it harder to receive care, such as economic or, psychosocial issues, legal problems, and lifestyle problems. Also includes counseling and follow up exams.

Perinatal Conditions

Conditions that have their origin in the time before, during, or just after birth, and affect the newborn, even if the effects of the condition occur later. Includes drugs passed to the fetus during gestation, placenta previa, prolapsed cord, complications of labor or delivery, birth trauma, prematurity, low birth weight, respiratory distress, jaundice, infections, and other conditions specific to newborns.

Pregnancy and Childbirth

Both the normal conditions and the complications of pregnancy, labor, and delivery. Includes ectopic pregnancy, miscarriage, pre-eclampsia, toxemia, early labor, multiple gestation, fetal malposition, fetal distress, lacerations, obstetrical trauma, postpartum hemorrhage, cesarean delivery, normal delivery, and lactation disorders.

Reproduction and Development

Includes well child visits, supervision of pregnancy, prenatal screening, postpartum care, and contraceptive and procreative management.

Respiratory System

Diseases of the upper respiratory tract (nose, sinuses, adenoids, tonsils, pharynx, vocal cords, larynx, etc.) and lungs. Includes common cold, flu, sinusitis, allergic rhinitis, deviated septum, tonsillitis, laryngitis, bronchitis, croup, asthma, pneumonia, emphysema, COPD.

Services or After Care

Care to persons to who may have already been treated but require care to consolidate treatment, to deal with residual effects, or to prevent recurrence. Includes physical, occupational, and speech therapy, rehabilitation, radiotherapy, chemotherapy, transfusions, surgical aftercare and follow up, and the long-term use of certain medications.

Skin and Subcutaneous Tissues

Infections, inflammatory conditions, and other diseases of the skin and the tissues directly under the skin (such as hair follicles, sebaceous glands, and sweat glands.) Includes boils, abscesses, cellulitis, skin ulcers, impetigo, seborrhea, exema, psoriasis, contact dermatitis, acne, urticaria, sunburn, diaper rash, itch, corns, calluses, ingrown nails, alopecia, and prickly heat.